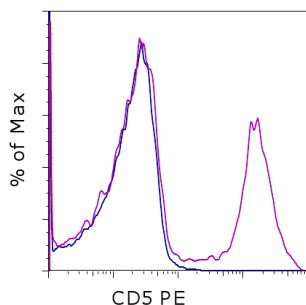


Anti-Canine CD5 PE

Catalog Number: 12-5050

RUO: For Research Use Only. Not for use in diagnostic procedures.



Staining of normal canine peripheral blood cells with Rat IgG2a K Isotype Control PE (cat. 12-4321) (blue histogram) or Anti-Canine CD5 PE (purple histogram). Cells in the lymphocyte gate were used for analysis.

Product Information

Contents: Anti-Canine CD5 PE
Catalog Number: 12-5050
Clone: YKIX322.3
Concentration: 5 μ L (0.25 μ g)/test
Host/Isotype: Rat IgG2a, kappa

Formulation: aqueous buffer, 0.09% sodium azide, may contain carrier protein/stabilizer

Temperature Limitation: Store at 2-8°C. Do not freeze. Light-sensitive material.

Batch Code: Refer to vial

Use By: Refer to vial

Description

This YKIX322.3 monoclonal antibody reacts with canine CD5, also known as Ly-1. CD5 is a 67-kDa type I transmembrane glycoprotein expressed on thymocytes and mature T cells. Studies have demonstrated that NK cells in dogs also express CD5, but at lower levels. In dogs, CD5 is not detectable on B cells or B cell lines.

Applications Reported

This YKIX322.3 antibody has been reported for use in flow cytometric analysis.

Applications Tested

This YKIX322.3 antibody has been pre-titrated and tested by flow cytometric analysis of normal canine peripheral blood cells. This can be used at 5 μ L (0.25 μ g) per test. A test is defined as the amount (μ g) of antibody that will stain a cell sample in a final volume of 100 μ L. Cell number should be determined empirically but can range from 10^5 to 10^8 cells/test.

References

Huang YC, Hung SW, Jan TR, Liao KW, Cheng CH, Wang YS, Chu RM. CD5-low expression lymphocytes in canine peripheral blood show characteristics of natural killer cells. *J Leukoc Biol.* 2008 Dec;84(6):1501-10.

Rabanal RM, Ferrer L, Else RW. Immunohistochemical detection of canine leucocyte antigens by specific monoclonal antibodies in canine normal tissues. *Vet Immunol Immunopathol.* 1995 Jul;47(1-2):13-23.

Cobbold S, Metcalfe S. Monoclonal antibodies that define canine homologues of human CD antigens: summary of the First International Canine Leukocyte Antigen Workshop (CLAW). *Tissue Antigens.* 1994 Mar;43(3):137-54. (YKIX322.3, FC)

Related Products

11-5040 Anti-Canine CD4 FITC (YKIX302.9)
12-4321 Rat IgG2a K Isotype Control PE (eBR2a)
17-5080 Anti-Canine CD8a APC (YCATE55.9)

Not for further distribution without written consent.

Copyright © 2000-2012 eBioscience, Inc.

Tel: 888.999.1371 or 858.642.2058 • Fax: 858.642.2046 • www.ebioscience.com •
info@ebioscience.com

Anti-Canine CD5 PE

Catalog Number: 12-5050

RUO: For Research Use Only. Not for use in diagnostic procedures.

Not for further distribution without written consent.

Copyright © 2000-2012 eBioscience, Inc.

Tel: 888.999.1371 or 858.642.2058 • Fax: 858.642.2046 • www.ebioscience.com •
info@ebioscience.com