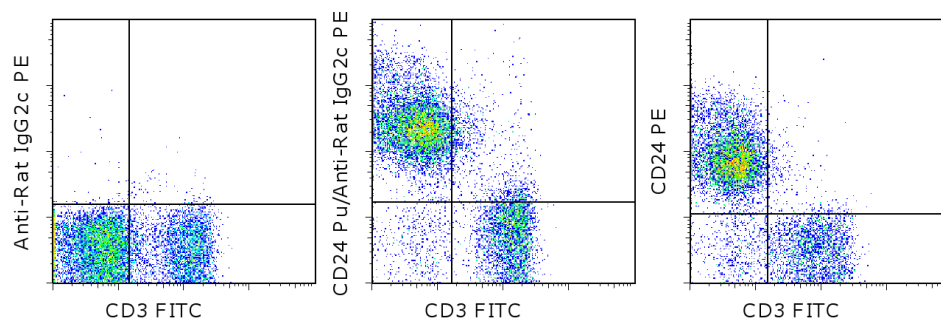


Anti-Rat IgG2c PE

Catalog Number: 12-4816

RUO: For Research Use Only. Not for use in diagnostic procedures.



Staining of C57Bl/6 splenocytes with Anti-Mouse CD3e FITC (cat. 11-0031) and buffer (left) or Anti-Mouse CD24 Purified (clone 30-F1, a rat IgG2c isotype)(cat. 14-0241) (middle) and subsequently stained 0.03 ug of Anti-Rat IgG2c PE. Right: Comparison to direct staining with Anti-Mouse CD3e FITC (cat. 11-0031) and Anti-Mouse CD24 PE (cat. 12-0241). Total viable cells were used for analysis.

Product Information

Contents: Anti-Rat IgG2c PE



Catalog Number: 12-4816

Clone: R2C-23A3

Concentration: 0.2 mg/mL

Host/Isotype: Mouse IgG1

Formulation: aqueous buffer, 0.09% sodium azide, contains stabilizer if necessary

Temperature Limitation: Store at 2-8°C. Do not freeze. Light-sensitive material.

Batch Code: Refer to vial

Use By: Refer to vial



Description

The monoclonal antibody R2C-23A3 recognizes Rat IgG2c antibodies and can be used as a second step reagent in flow cytometry and microscopy. The monoclonal does not recognize other rat or mouse antibody isotypes.

Applications Reported

This R2C-23A3 antibody has been reported for use in flow cytometric analysis.

Applications Tested

This R2C-23A3 antibody has been tested by flow cytometric analysis of cell stained with rat IgG2c primary antibody. This can be used at less than or equal to 0.06 µg per test. A test is defined as the amount (µg) of antibody that will stain a cell sample in a final volume of 100 µL. Cell number should be determined empirically but can range from 10⁵ to 10⁸ cells/test. It is recommended that the antibody be carefully titrated for optimal performance in the assay of interest.

Related Products

11-0031 Anti-Mouse CD3e FITC (145-2C11)

12-0241 Anti-Mouse CD24 PE (30-F1)

14-0241 Anti-Mouse CD24 Purified (30-F1)

Not for further distribution without written consent.

Copyright © 2000-2012 eBioscience, Inc.

Tel: 888.999.1371 or 858.642.2058 • Fax: 858.642.2046 • www.ebioscience.com •
info@ebioscience.com