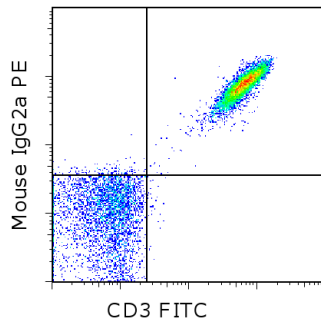


Anti-Mouse IgG2a PE

Catalog Number: 12-4210

RUO: For Research Use Only. Not for use in diagnostic procedures.



Staining of normal human peripheral blood cells with Anti-Human CD3 FITC (Clone HIT3a, a mouse IgG2a isotype)(cat. 11-0039) followed by Anti-Mouse IgG2a PE (right). Cells in the lymphocyte gate were used for analysis.

Product Information

Contents: Anti-Mouse IgG2a PE
Catalog Number: 12-4210
Clone: m2a-15F8
Concentration: 0.2 mg/mL
Host/Isotype: Rat IgG1, kappa



Formulation: aqueous buffer, 0.09% sodium azide, may contain carrier protein/stabilizer
Temperature Limitation: Store at 2-8°C. Do not freeze. Light-sensitive material.

Batch Code: Refer to vial

Use By: Refer to vial

Contains sodium azide

Description

The monoclonal antibody m2a-15F8 recognizes Mouse IgG2a antibodies and can be used as a second step reagent in flow cytometry and microscopy. The monoclonal does not recognize other mouse isotypes nor does it crossreact to rat IgG2a or any rat isotype antibodies.

Applications Reported

This m2a-15F8 antibody has been reported for use in flow cytometric analysis.

Applications Tested

This m2a-15F8 antibody has been tested by flow cytometric analysis of cells stained with a mouse IgG2a primary antibody. This can be used at less than or equal to 0.06 µg per test. A test is defined as the amount (µg) of antibody that will stain a cell sample in a final volume of 100 µL. Cell number should be determined empirically but can range from 10⁵ to 10⁸ cells/test. It is recommended that the antibody be carefully titrated for optimal performance in the assay of interest.

Related Products

11-0039 Anti-Human CD3 FITC (HIT3a)

Not for further distribution without written consent.

Copyright © 2000-2012 eBioscience, Inc.

Tel: 888.999.1371 or 858.642.2058 • Fax: 858.642.2046 • www.ebioscience.com •
info@ebioscience.com