

Pacific Blue™ anti-human/mouse CD49f

Catalog # / Size: 313619 / 25 tests
313620 / 100 tests

Clone: GoH3

Isotype: Rat IgG2a, κ

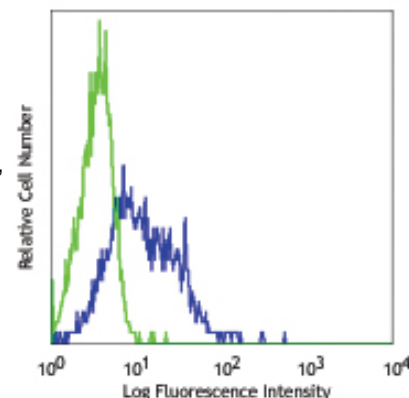
Immunogen: Mouse mammary tumor cells

Reactivity: Human, Mouse, **Cross-Reactivity:** Baboon, Chimpanzee, Capuchin Monkey, Cynomolgus, Rhesus, Horse (Equine), Cattle (Bovine, Cow), Sheep (Ovine), Swine (Pig, Porcine), Dog (Canine), Cat (Feline), Rabbit (Lapine)

Preparation: The antibody was purified by affinity chromatography, and conjugated with Pacific Blue™ under optimal conditions. The solution is free of unconjugated Pacific Blue™.

Formulation: Phosphate-buffered solution, pH 7.2, containing 0.09% sodium azide and 0.2% (w/v) BSA (origin USA).

Storage: The antibody solution should be stored undiluted at 4°C and protected from prolonged exposure to light. **Do not freeze.**



Human peripheral blood lymphocytes stained with GoH3 Pacific Blue™

Applications:

Applications: FC - Quality tested

Recommended Usage: Each lot of this antibody is quality control tested by immunofluorescent staining with flow cytometric analysis. For immunofluorescent staining, the suggested use of this reagent is 5 µl per million cells or 5 µl per 100 µl of whole blood. It is recommended that the reagent be titrated for optimal performance for each application.

* Pacific Blue™ has a maximum emission of 455 nm when it is excited at 405 nm. Prior to using Pacific Blue™ conjugate for flow cytometric analysis, please verify your flow cytometer's capability of exciting and detecting the fluorochrome.

** Pacific Blue™ is a registered trademark of Molecular Probes, Inc. Pacific Blue™ dye antibody conjugates are sold under license from Molecular Probes, Inc. for research use only, except for use in combination with microarrays and high content screening, and are covered by pending and issued patents.

Application Notes: Additional reported applications (for the relevant formats) include: immunoprecipitation^{1,5}, *in vitro* and *in vivo* blocking of cell binding to laminin and blocking the function of integrin α₆^{1,4}, and immunohistochemistry of acetone-fixed frozen sections^{2,3,5}. The GoH3 antibody has been reported to block laminin binding *in vitro* and to block integrin α₆ function *in vivo*.

Application References:

1. Georas SN, *et al.* 1993. *Blood* 82:2872. (IP, Block)
2. Honda T, *et al.* 1995. *J. Clin. Endocrinol. Metab.* 80:2899. (IHC)
3. Sonnenberg A, *et al.* 1986. *J. Histochem. Cytochem.* 34:1037. (IHC)
4. Nakamura K, *et al.* 1997 *Biochem. Biophys. Res. Commun.* 235:524. (Block)
5. Sonnenberg A, *et al.* 1987 *J. Biol. Chem.* 262:10376. (IP, IHC)
6. Deregibus MC, *et al.* 2007. *Blood* doi:10.1182/blood-2007-03-078709.
7. Horwitz KB, *et al.* 2008. *Proc Natl Acad Sci USA.* 105:5774. PubMed
8. Nardella C, *et al.* 2009. *Sci Signal.* 2:55. PubMed
9. Xu T, *et al.* 2010. *Mol Cancer Ther.* 9:438. PubMed
10. Stepp MA, *et al.* 2007. *J Cell Sci.* 120:2851. PubMed
11. Jo M, *et al.* 2010. *Cancer Res.* 70:8948. PubMed
12. Yoshino N, *et al.* 2000. *Exp. Anim. (Tokyo)* 49:97. (FC)
13. Grange C, *et al.* 2011. *Cancer Res.* 71:5346. PubMed
14. Lai KP, *et al.* 2012. *Mol Endocrinol.* 26:52. PubMed
15. Oeztuerk-Winder F, *et al.* 2012. *EMBO J.* 31:3431. (FC) PubMed

Description: CD49f is a 120 kD integrin family member also known as VLA-6 α chain and α₆ integrin subunit. CD49f associates with either integrin β₁ (CD29) or integrin β₄ (CD104) to form receptors (VLA-6 or α₆β₄ complex) for laminin and kalinin. CD49f is expressed on platelets, monocytes, T cells, placental trophoblasts, epithelial and endothelial cells. CD49f is involved in adhesion and can act as a co-stimulatory molecule for T cell activation and proliferation.

Antigen References:

1. Sonnenberg A, *et al.* 1990. *J. Cell Biol.* 110:2145.
2. Sonnenberg A, *et al.* 1990. *J. Cell. Sci.* 96:207.
3. Aumailley M, *et al.* 1990. *Exp. Cell Res.* 188:55.
4. Niessen CM, *et al.* 1994. *Exp. Cell Res.* 211:360.

Related Products: Product

Clone

Application



For research use only. Not for diagnostic use. Not for resale. BioLegend will not be held responsible for patent infringement or other violations that may occur with the use of our products.



*These products may be covered by one or more Limited Use Label Licenses (see the BioLegend Catalog or our website, www.biologend.com/ordering#license). BioLegend products may not be transferred to third parties, resold, modified for resale, or used to manufacture commercial products, reverse engineer functionally similar materials, or to provide a service to third parties without written approval of BioLegend. By use of these products you accept the terms and conditions of all applicable Limited Use Label Licenses. Unless otherwise indicated, these products are for research use only and are not intended for human or animal diagnostic, therapeutic or commercial use.

Pacific Blue™ Rat IgG2a, κ Isotype Ctrl
Cell Staining Buffer
RBC Lysis Buffer (10X)
Human TruStain FcX™ (Fc Receptor Blocking Solution)

RTK2758

FC, ICFC
FC, ICC, ICFC
FC, ICFC
FC, ICC, ICFC



For research use only. Not for diagnostic use. Not for resale. BioLegend will not be held responsible for patent infringement or other violations that may occur with the use of our products.



*These products may be covered by one or more Limited Use Label Licenses (see the BioLegend Catalog or our website, www.biolegend.com/ordering#license). BioLegend products may not be transferred to third parties, resold, modified for resale, or used to manufacture commercial products, reverse engineer functionally similar materials, or to provide a service to third parties without written approval of BioLegend. By use of these products you accept the terms and conditions of all applicable Limited Use Label Licenses. Unless otherwise indicated, these products are for research use only and are not intended for human or animal diagnostic, therapeutic or commercial use.

BioLegend Inc., 9727 Pacific Heights Blvd, San Diego, CA 92121 www.biolegend.com
Toll-Free Phone: 1-877-Bio-Legend (246-5343) Phone: (858) 455-9588 Fax: (858) 455-9587