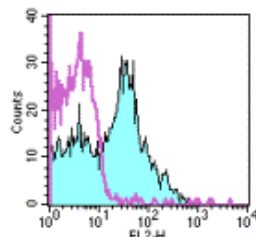


Anti-Mouse CD180 (RP105) PE

Catalog Number: 12-1801

Also Known As: RP-105, Toll-like Receptor, TLR Family, LY-78

RUO: For Research Use Only



Staining of BALB/c splenocytes with 0.06 µg of Rat IgG2a κ Isotype Control PE (cat. 12-4321) (open histogram) or 0.125 µg of Anti-Mouse CD180 (RP105) PE (filled histogram). Total viable cells were used for analysis.

Product Information

Contents: Anti-Mouse CD180 (RP105) PE


 Catalog Number: 12-1801

Clone: RP/14

Concentration: 0.2 mg/ml


Host/Isotype: Rat IgG2a, κ

Formulation: aqueous buffer, 0.09% sodium azide, may contain carrier protein/stabilizer

 Temperature Limitation: Store at 2-8°C. Do not freeze. Light sensitive material.

 Batch Code: Refer to Vial

 Use By: Refer to Vial

 Caution, contains Azide

Description

The RP/14 monoclonal antibody reacts with mouse CD180 (RP105). This 105 kDa type I transmembrane molecule is a member of the TLR family of proteins characterized by an extracellular domain with leucine-rich repeats and a cytoplasmic domain with homology to the type I IL-1 receptor. RP105 physically associates with another molecule called MD-1 and is expressed on mature B cells, monocytes/macrophages and dendritic cells. Ligation of RP105 with RP/14 protects B cells from irradiation- or dexamethasone-induced apoptosis, and drives them to proliferate. B cells activated by RP105-ligation arrest their growth and undergo apoptosis when the antigen receptor is engaged. The RP105/MD-1 complex in concert with TLR4 mediates B cell recognition and signaling of LPS. Thus, RP105 is a signal transduction molecule and plays a role in regulation of B cell growth and death.

Applications Reported

The RP/14 antibody has been reported for use in flow cytometric analysis.

Applications Tested

The RP/14 antibody has been tested by flow cytometric analysis of mouse splenocyte suspensions. This can be used at less than or equal to 0.125 µg per test. A test is defined as the amount (µg) of antibody that will stain a cell sample in a final volume of 100 µL. Cell number should be determined empirically but can range from 10⁵ to 10⁸ cells/test. It is recommended that the antibody be carefully titrated for optimal performance in the assay of interest.

References

- Miyake, K., Y. Yamashita, et al. 1995. RP105, a novel B cell surface molecule implicated in B cell activation, is a member of the leucine-rich repeat protein family. *J Immunol* 154(7): 3333-40.
- Miyake, K., R. Shimazu, et al. 1998. Mouse MD-1, a molecule that is physically associated with RP105 and positively regulates its expression. *J Immunol* 161(3): 1348-53.
- Ogata, H., I. Su, et al. 2000. The toll-like receptor protein RP105 regulates lipopolysaccharide signaling in B cells. *J Exp Med* 192(1): 23-9.

Related Products

12-4321 Rat IgG2a K Isotype Control PE

14-8185 B18R Recombinant Protein

34-8185 B18R Recombinant Protein Carrier-Free

Not for further distribution without written consent.

Copyright © 2000-2010 eBioscience, Inc.

Tel: 888.999.1371 or 858.642.2058 • Fax: 858.642.2046 • www.eBioscience.com • info@eBioscience.com