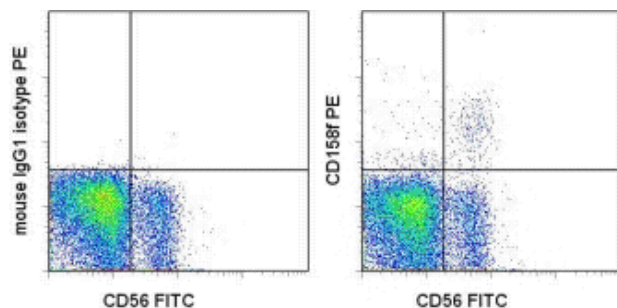


Anti-Human CD158f PE

Catalog Number: 12-1588

Also Known As: KIR2DL1/S1, KIR

RUO: For Research Use Only. Not for use in diagnostic procedures.



Staining of normal human peripheral blood cells with Anti-Human CD56 (NCAM) FITC and Mouse IgG1 kappa Isotype Control PE (cat. 12-4714) (left) or Anti-Human CD158f PE (right). Cells in the lymphocyte gate were used for analysis.

Product Information

Contents: Anti-Human CD158f PE


REF Catalog Number: 12-1588

Clone: UP-R1


Concentration: 5 μ L (0.25 μ g)/test


Host/Isotype: Mouse IgG1

Formulation: aqueous buffer, 0.09% sodium azide, may contain carrier protein/stabilizer

 Temperature Limitation: Store at 2-8°C. Do not freeze. Light sensitive material.

LOT Batch Code: Refer to Vial

 Use By: Refer to Vial

 Caution, contains Azide

Description

This UP-R1 monoclonal antibody recognizes human CD158f, also known as KIR2DL5. CD158f is an inhibitory receptor and a member of the KIR (Killer cell Ig-like receptors) family of receptors, which recognizes subsets of HLA alleles. Expression is found mainly on a subset of NK cells with minimal expression also present on a minor subset of T lymphocytes in some individuals. This new member of the family is highly polymorphic and expression is not found on many human donors. Activation of the receptor and tyrosine phosphorylation recruits SHP-2 and SHP-1 to the ITIM cytoplasmic domain.

The UP-R1 antibody has been shown to inhibit NK cytotoxicity.

Applications Reported

This UP-R1 antibody has been reported for use in flow cytometric analysis.

Applications Tested

This UP-R1 antibody has been pre-titrated and tested by flow cytometric analysis of normal human peripheral blood cells. This can be used at 5 μ L (0.25 μ g) per test. A test is defined as the amount (μ g)/test of antibody that will stain a cell sample in a final volume of 100 μ L. Cell number should be determined empirically but can range from 10^5 to 10^8 cells/test.

Please note: There is significant donor variability observed. Only a small percentage of donors tested showed bright staining; all others were completely negative.

References

Du Z, Sharma SK, Spellman S, Reed EF, Rajalingam R. KIR2DL5 alleles mark certain combination of activating KIR genes. *Genes Immun.* 2008 Jul;9(5):470-80. 2008

Estefanía E, Flores R, Gómez-Lozano N, Aguilar H, López-Botet M, Vilches C Human KIR2DL5 is an inhibitory receptor expressed on the surface of NK and T lymphocyte subsets. *J Immunol.* 2007 Apr 1;178(7):4402-10. (UP-R1, FC, FA, IP PubMed)

Related Products

12-4714 Mouse IgG1 K Isotype Control PE (P3.6.2.1)

Not for further distribution without written consent.

Copyright © 2000-2010 eBioscience, Inc.

Tel: 888.999.1371 or 858.642.2058 • Fax: 858.642.2046 • www.eBioscience.com • info@eBioscience.com