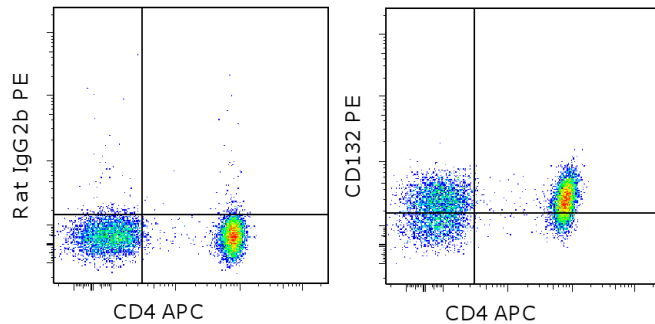


## Anti-Human CD132 PE

**Catalog Number:** 12-1329

**Also known as:** common gamma chain, IL-2RG, SCIDX

**RUO: For Research Use Only. Not for use in diagnostic procedures.**



Staining of normal human peripheral blood cells with Anti-Human CD4 APC (cat. 17-0049) and Rat IgG2b K Isotype Control PE (cat. 12-4031) (left) or Anti-Human CD132 PE (right). Cells in the lymphocyte gate were used for analysis.

### Product Information



**Contents:** Anti-Human CD132 PE

**Catalog Number:** 12-1329

**Clone:** TUGh4

**Concentration:** 5  $\mu$ L (0.125  $\mu$ g)/test

**Host/Isotype:** Rat IgG2b, lambda



**Formulation:** aqueous buffer, 0.09% sodium azide, may contain carrier protein/stabilizer

**Temperature Limitation:** Store at 2-8°C. Do not freeze. Light-sensitive material.



**Batch Code:** Refer to vial



**Use By:** Refer to vial

### Description

This TUGh4 monoclonal antibody reacts with human CD132, the common gamma chain (gamma c) shared by the IL-2, IL-4, IL-7, IL-9, and IL-15 receptors. This approximately 65 kDa receptor component is expressed on T and B lymphocytes, NK cells, monocytes, and granulocytes. CD132 is involved in intracellular signal transduction by associating with effector molecules within the cytoplasm. Mutations in the human gamma chain gene result in X-linked severe combined immunodeficiency (XSCID), a disease characterized by T cell deficiency leading to impairment of cell-mediated and humoral immunity.

### Applications Reported

This TUGh4 antibody has been reported for use in flow cytometric analysis.

### Applications Tested

This TUGh4 antibody has been pre-titrated and tested by flow cytometric analysis of normal human peripheral blood cells. This can be used at 5  $\mu$ L (0.125  $\mu$ g) per test. A test is defined as the amount ( $\mu$ g) of antibody that will stain a cell sample in a final volume of 100  $\mu$ L. Cell number should be determined empirically but can range from  $10^5$  to  $10^8$  cells/test.

### References

Sugamura K, Asao H, Kondo M, Tanaka N, Ishii N, Ohbo K, Nakamura M, Takeshita T. The interleukin-2 receptor gamma chain: its role in the multiple cytokine receptor complexes and T cell development in XSCID. *Annu Rev Immunol.* 1996;14:179-205.

Ishii N, Takeshita T, Kimura Y, Tada K, Kondo M, Nakamura M, Sugamura K. Expression of the IL-2 receptor gamma chain on various populations in human peripheral blood. *Int Immunol.* 1994 Aug;6(8):1273-7.

### Related Products

12-4031 Rat IgG2b K Isotype Control PE

17-0049 Anti-Human CD4 APC (RPA-T4)

Not for further distribution without written consent.

Copyright © 2000-2012 eBioscience, Inc.

Tel: 888.999.1371 or 858.642.2058 • Fax: 858.642.2046 • [www.ebioscience.com](http://www.ebioscience.com) •  
[info@ebioscience.com](mailto:info@ebioscience.com)

---

## Anti-Human CD132 PE

**Catalog Number:** 12-1329

**Also known as:** common gamma chain, IL-2RG, SCIDX

**RUO: For Research Use Only. Not for use in diagnostic procedures.**

---

---

Not for further distribution without written consent.

Copyright © 2000-2012 eBioscience, Inc.

Tel: 888.999.1371 or 858.642.2058 • Fax: 858.642.2046 • [www.ebioscience.com](http://www.ebioscience.com) •  
[info@ebioscience.com](mailto:info@ebioscience.com)