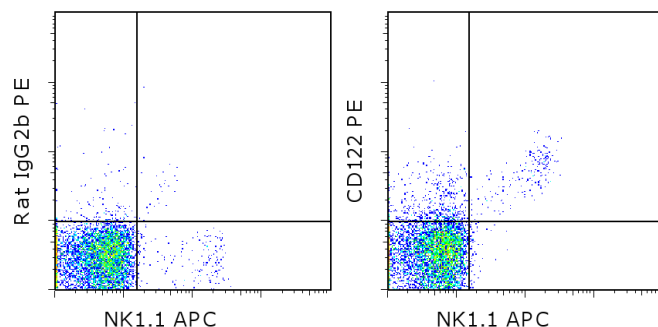


Anti-Mouse CD122 PE

Catalog Number: 12-1222

Also known as: Interleukin-2 Receptor beta, IL-2Rb

RUO: For Research Use Only. Not for use in diagnostic procedures.



Staining of C57BL/6 splenocytes with Anti-Mouse NK1.1 APC (cat. 17-5941) and 0.06 ug of Rat IgG2b K Isotype Control PE (cat. 12-4031) (left) or 0.06 ug of Anti-Mouse CD122 PE (right). Total viable cells were used for analysis.

Product Information



Contents: Anti-Mouse CD122 PE

Catalog Number: 12-1222

Clone: TM-b1 (TM-beta1)

Concentration: 0.2 mg/mL

Host/Isotype: Rat IgG2b



Formulation: aqueous buffer, 0.09% sodium azide, may contain carrier protein/stabilizer

Temperature Limitation: Store at 2-8°C. Do not freeze. Light sensitive material.



Batch Code: Refer to vial



Use By: Refer to vial

Description

The TM-b1 monoclonal antibody reacts with mouse CD122, the 90-110 kDa interleukin-2 receptor beta chain (IL-2R beta). CD122 is expressed by NK cells and some T cells in the periphery, and is upregulated by activation. CD122 associates with CD25 and CD132 (common gamma chain) to form the high affinity IL-2 receptor. High affinity binding of IL-2 to the IL-2 receptor is inhibited by the TM-b1 antibody.

Applications Reported

The TM-b1 antibody has been reported for use in flow cytometric analysis.

Applications Tested

This TM-b1 (TM-beta1) antibody has been tested by flow cytometric analysis of mouse splenocyte suspensions. This can be used at less than or equal to 0.125 µg per test. A test is defined as the amount (µg) of antibody that will stain a cell sample in a final volume of 100 µL. Cell number should be determined empirically but can range from 10⁵ to 10⁸ cells/test. It is recommended that the antibody be carefully titrated for optimal performance in the assay of interest.

References

French JD, Roark CL, Born WK, O'Brien RL. Gamma delta T cell homeostasis is established in competition with alpha beta T cells and NK cells. Proc Natl Acad Sci U S A. 2005 Oct 11;102(41):14741-6. (**TM-b1**, FA blocking, PubMed)

Takeuchi Y, Tanaka T, Hamamura K, Sugimoto T, Miyasaka M, Yagita H, Okumura K. 1992. Expression and role of interleukin-2 receptor beta chain on CD4-CD8- T cell receptor alpha beta+ cells. Eur J Immunol. 22(11):2929-35.

Tanaka T, Takeuchi Y, Shiohara T, Kitamura F, Nagasaka Y, Hamamura K, Yagita H, Miyasaka M. 1992. In utero treatment with monoclonal antibody to IL-2 receptor beta-chain completely abrogates development of Thy-1+ dendritic epidermal cells. Int Immunol. 4(4):487-91.

Related Products

12-4031 Rat IgG2b K Isotype Control PE

Not for further distribution without written consent.

Copyright © 2000-2012 eBioscience, Inc.

Tel: 888.999.1371 or 858.642.2058 • Fax: 858.642.2046 • www.ebioscience.com • info@ebioscience.com

Anti-Mouse CD122 PE

Catalog Number: 12-1222

Also known as: Interleukin-2 Receptor beta, IL-2Rb

RUO: For Research Use Only. Not for use in diagnostic procedures.

16-1221 Anti-Mouse CD122 Functional Grade Purified (5H4)

17-5941 Anti-Mouse NK1.1 APC (PK136)

Not for further distribution without written consent.

Copyright © 2000-2012 eBioscience, Inc.

Tel: 888.999.1371 or 858.642.2058 • Fax: 858.642.2046 • www.ebioscience.com •
info@ebioscience.com