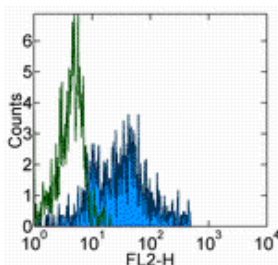


## Anti-Human CD115 (c-fms) PE

**Catalog Number:** 12-1159

**Also Known As:** CSF1R , colony-stimulating factor 1 Receptor

**RUO: For Research Use Only. Not for use in diagnostic procedures.**



Staining of normal human peripheral blood cells with Rat IgG2a Isotype Control PE (cat. 12-4321) (open histogram) or Anti-Human CD115 (c-fms) PE (filled histogram). Cells in the monocyte gate were used for analysis.

### Product Information

**Contents:** Anti-Human CD115 (c-fms) PE


**REF** **Catalog Number:** 12-1159

**Clone:** 12-3A3-1B10


**Concentration:** 5  $\mu$ L (0.03  $\mu$ g)/test

**Host/Isotype:** Rat IgG2a, kappa

**Formulation:** aqueous buffer, 0.09% sodium azide, may contain carrier protein/stabilizer

 **Temperature Limitation:** Store at 2-8°C. Do not freeze. Light sensitive material.

**LOT** **Batch Code:** Refer to Vial

 **Use By:** Refer to Vial

 **Contains sodium azide**

### Description

CD115 or Colony-Stimulating Factor-1 Receptor (CSF-1R) is expressed on cells committed to the monocyte lineage and osteoclasts. CSF-1R is a disulfide-linked homodimer, which upon binding of its ligand, CSF-1, undergoes tyrosine autophosphorylation and subsequently, phosphorylates other membrane-proximal downstream targets which results in cytoskeletal remodeling, gene transcription and protein translation. CSF-1R activation promotes the survival, proliferation and differentiation of mononuclear phagocytes and the spreading and motility of macrophages. In osteoclasts, CSF-1R synergizes with RANKL to regulate the differentiation of mononuclear phagocytes to osteoclasts.

### Applications Reported

This 12-3A3-1B10 antibody has been reported for use in flow cytometric analysis.

### Applications Tested

This 12-3A3-1B10 antibody has been pre-titrated and tested by flow cytometric analysis of normal human peripheral blood. This can be used at 5  $\mu$ L (0.03  $\mu$ g) per test. A test is defined as the amount ( $\mu$ g) of antibody that will stain a cell sample in a final volume of 100  $\mu$ L. Cell number should be determined empirically but can range from  $10^5$  to  $10^8$  cells/test.

### References

Pixley FJ, Stanley ER. CSF-1 regulation of the wandering macrophage: complexity in action. *Trends Cell Biol.* 2004 Nov;14(11):628-38. Review.

Ashmun RA, Look AT, Roberts WM, Roussel MF, Seremetis S, Ohtsuka M, Sherr CJ. Monoclonal antibodies to the human CSF-1 receptor (c-fms proto-oncogene product) detect epitopes on normal mononuclear phagocytes and on human myeloid leukemic blast cells. *Blood.* 1989 Feb 15;73(3):827-37. (12-3A3-1B10, FC, PubMed)

### Related Products

11-0141 Anti-Mouse CD14 FITC (Sa2-8)

12-4321 Rat IgG2a K Isotype Control PE (eBR2a)

Not for further distribution without written consent.

Copyright © 2000-2012 eBioscience, Inc.

Tel: 888.999.1371 or 858.642.2058 • Fax: 858.642.2046 • [www.eBioscience.com](http://www.eBioscience.com) • [info@eBioscience.com](mailto:info@eBioscience.com)