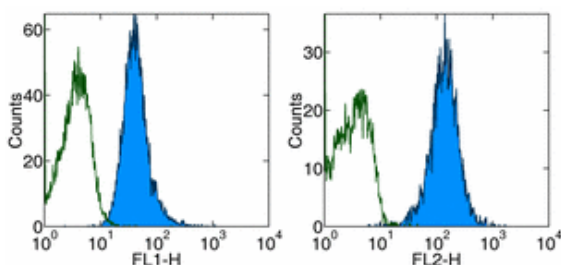


Anti-Mouse CD98 PE

Catalog Number: 12-0981

Also Known As: 4F2, Ly-10

RUO: For Research Use Only



Staining of mouse splenocytes with Rat IgG2a κ Isotype Control FITC (cat. 11-4321) (left, open histogram) or Rat IgG2a κ Isotype Control PE (cat. 12-4321) (right, open histogram) and Anti-Mouse CD98 FITC (left, filled histogram) and 0.25 μ g of Anti-Mouse CD98 PE (right, filled histogram). Total viable cells were used for analysis.

Product Information

Contents: Anti-Mouse CD98 PE


REF Catalog Number: 12-0981

Clone: RL388

Concentration: 0.2 mg/ml


Host/Isotype: Rat IgG2a, κ

Formulation: aqueous buffer, 0.09% sodium azide, may contain carrier protein/stabilizer

 Temperature Limitation: Store at 2-8°C. Do not freeze. Light sensitive material.

LOT Batch Code: Refer to Vial

 Use By: Refer to Vial

 Caution, contains Azide

Description

The RL388 monoclonal antibody reacts with mouse CD98, also known as 4F2 antigen and Ly-10. RL388 detects a disulfide-linked heterodimer complex (130 kDa) composed of a glycosylated heavy (86 kDa) and a nonglycosylated light (39 kDa) subunits. CD98 is expressed on the surface of activated lymphocytes and is involved in cell activation and calcium flux events.

Applications Reported

The RL388 antibody has been reported for use in flow cytometric analysis.

Applications Tested

The RL388 antibody has been tested by flow cytometric analysis of activated and resting mouse splenocyte cell suspensions. This can be used at less than or equal to 0.5 μ g per test. A test is defined as the amount (μ g) of antibody that will stain a cell sample in a final volume of 100 μ L. Cell number should be determined empirically but can range from 10^5 to 10^8 cells/test. It is recommended that the antibody be carefully titrated for optimal performance in the assay of interest.

References

- MacDonald HR, Lees RK, Bron C. 1985. Cell surface glycoproteins involved in the stimulation of interleukin 1-dependent interleukin 2 production by a subline of EL4 thymoma cells. I. Functional characterization by monoclonal antibodies. *J Immunol.* 135(6):3944-50.
- Luscher B, Rousseaux M, Lees R, MacDonald HR, Bron C. 1985. Cell surface glycoproteins involved in the stimulation of interleukin 1-dependent interleukin 2 production by a subline of EL4 thymoma cells. II. Structure, biosynthesis, and maturation. *J. Immunol.* 135(6):3951-7.

Related Products

12-4321 Rat IgG2a K Isotype Control PE

Not for further distribution without written consent.

Copyright © 2000-2010 eBioscience, Inc.

Tel: 888.999.1371 or 858.642.2058 • Fax: 858.642.2046 • www.eBioscience.com • info@eBioscience.com