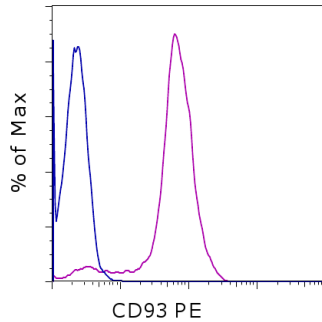


Anti-Human CD93 PE

Catalog Number: 12-0938

Also known as: C1qRp, C1q Receptor, C1qR

RUO: For Research Use Only. Not for use in diagnostic procedures.



Staining of normal human peripheral blood cells with Mouse IgM Isotype Control PE (cat. 12-4752) (blue histogram) or Anti-Human CD93 PE (purple histogram). Cells in the monocyte gate were used for analysis.

Product Information



Contents: Anti-Human CD93 PE

Catalog Number: 12-0938

Clone: R3

Concentration: 5 μ L (0.125 μ g)/test

Host/Isotype: Mouse IgM



Formulation: aqueous buffer, 0.09% sodium azide, may contain carrier protein/stabilizer

Temperature Limitation: Store at 2-8°C. Do not freeze. Light-sensitive material.



Batch Code: Refer to vial



Use By: Refer to vial

Description

The monoclonal antibody R3 recognizes human CD93, also known as C1qRp. The glycoprotein CD93 binds to C1q, the subunit of the complement protein, mannose binding lectin and pulmonary surfactant protein A. CD93 is predicted to play a role in the clearance of apoptotic cells. Expression of CD93 is confined to myeloid cells with higher expression on monocytes than neutrophils, eosinophils, platelets and endothelial cells. Expression on DC's is downregulated upon maturation. Additionally, CD93 has been shown to define an early bone marrow stem cell population of hematopoietic and hepatic precursors.

The R3 antibody has been shown to have activating function by increasing phagocytosis when presented in an immobilized state and inhibitory functions when presented in a soluble state. CD93 can be shed from the cell surface. This phenomenon can be measured using R3 antibody as detection with R139 as capture to detect soluble CD93 by ELISA. The epitope for R3 lies in the CRD domain.

The R3 antibody has been shown to have activating function by increasing phagocytosis when presented in an immobilized state and inhibitory functions when presented in a soluble state. CD93 can be shed from the cell surface. This phenomenon can be measured using R3 antibody as detection with R139 as capture to detect soluble CD93 by ELISA. The epitope for R3 lies in the CRD domain.

Applications Reported

This R3 antibody has been reported for use in flow cytometric analysis.

Applications Tested

This R3 antibody has been pre-titrated and tested by flow cytometric analysis of normal human peripheral blood cells. This can be used at 5 μ L (0.125 μ g) per test. A test is defined as the amount (μ g) of antibody that will stain a cell sample in a final volume of 100 μ L. Cell number should be determined empirically but can range from 10^5 to 10^8 cells/test.

References

Bohlon SS, Silva R, Fonseca MI, Tenner AJ. CD93 is rapidly shed from the surface of human myeloid cells and the soluble form is detected in human plasma. *J Immunol.* 2005 Jul 15;175(2):1239-47. (R3, ELISA, WB, PubMed)

Not for further distribution without written consent.

Copyright © 2000-2012 eBioscience, Inc.

Tel: 888.999.1371 or 858.642.2058 • Fax: 858.642.2046 • www.ebioscience.com •
info@ebioscience.com

Anti-Human CD93 PE

Catalog Number: 12-0938

Also known as: C1qRp, C1q Receptor, C1qR

RUO: For Research Use Only. Not for use in diagnostic procedures.

Danet GH, Luongo JL, Butler G, Lu MM, Tenner AJ, Simon MC, Bonnet DA. C1qRp defines a new human stem cell population with hematopoietic and hepatic potential. Proc Natl Acad Sci U S A. 2002 Aug 6;99(16):10441-5. (R3, FC, PubMed)

Nepomuceno RR, Tenner AJ. C1qRP, the C1q receptor that enhances phagocytosis, is detected specifically in human cells of myeloid lineage, endothelial cells, and platelets. J Immunol. 1998 Feb 15;160(4):1929-35. (R3, FC, PubMed)

Related Products

12-4752 Mouse IgM Isotype Control PE

46-0149 Anti-Human CD14 PerCP-eFluor® 710 (61D3)

88-50340 Human sCD93 ELISA Ready-SET-Go!®

Not for further distribution without written consent.

Copyright © 2000-2012 eBioscience, Inc.

Tel: 888.999.1371 or 858.642.2058 • Fax: 858.642.2046 • www.ebioscience.com •
info@ebioscience.com