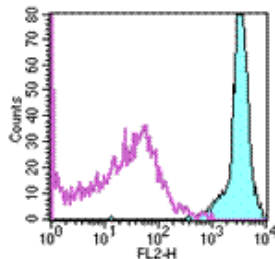


Anti-Rat CD45.2 PE

Catalog Number: 12-0450

Also Known As: Ly5.2

RUO: For Research Use Only



Staining of rat splenocytes with 0.125 µg of Mouse IgG1 κ Isotype Control PE (cat. 12-4714) (open histogram) or 0.125 µg of Anti-Rat CD45.2 PE (filled histogram). Total viable cells were used for analysis.

Product Information

Contents: Anti-Rat CD45.2 PE


REF Catalog Number: 12-0450

Clone: HIS41


Concentration: 0.2 mg/ml

Host/Isotype: Mouse IgG1

Formulation: aqueous buffer, 0.09% sodium azide, may contain carrier protein/stabilizer

 Temperature Limitation: Store at 2-8°C. Do not freeze. Light sensitive material.

LOT Batch Code: Refer to Vial

 Use By: Refer to Vial

 Caution, contains Azide

Description

The HIS41 monoclonal antibody reacts with all isoforms of the rat CD45 molecule, also known as Leukocyte Common Antigen (LCA). CD45 is expressed by all hematopoietic cells excluding mature erythrocytes and platelets. The cytoplasmic portion of CD45 has tyrosine phosphatase enzymatic activity and plays an important role in signaling and activation of lymphocytes. HIS41 reacts with strains expressing the RT7.2 alloantigen (BUF, LOU, and WF), but not strains expressing the RT7.1 alloantigen (ACI, AO, BN, DA, DZB, LEW, MAXX, PVG, SHR, and WAG).

Applications Reported

The HIS41 antibody has been reported for use in flow cytometric analysis.

Applications Tested

The HIS41 antibody has been tested by flow cytometric analysis of LOU rat splenocyte suspensions. This can be used at less than or equal to 0.25 µg per test. A test is defined as the amount (µg) of antibody that will stain a cell sample in a final volume of 100 µL. Cell number should be determined empirically but can range from 10⁵ to 10⁸ cells/test. It is recommended that the antibody be carefully titrated for optimal performance in the assay of interest.

References

- Kampinga, J., F.G.M. Kroese, G.H. Pol, D. Opstelten, H.G. Seijen, J.H.A. Boot, B. Roser, P. Nieuwenhuis, and R. Aspinall. 1990. RT7-defined alloantigens in rats are part of the leukocyte common antigen family. *Scand. J. Immunol.* 31:699-710.
- Giezeman-Smits, K. M., A. Gorter, R. L. P. van Vlierberghe, J. D. H. v. Eendenburg, A. M. M. Eggermont, G. J. Fleuren, P. J. K. Kuppen. 1999. The Regulatory Role of CD45 on Rat NK Cells in Target Cell Lysis. *J. Immunol.* 163:71-76.
- Butcher, G.W. 1987. A list of monoclonal antibodies specific for alloantigens of the rat. *J. Immunogenet.* 14:163-176.

Related Products

12-4714 Mouse IgG1 K Isotype Control PE

Not for further distribution without written consent.

Copyright © 2000-2010 eBioscience, Inc.

Tel: 888.999.1371 or 858.642.2058 • Fax: 858.642.2046 • www.eBioscience.com • info@eBioscience.com