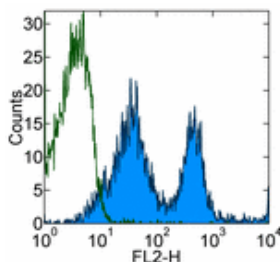


## Anti-Mouse CD43 PE

Catalog Number: 12-0431

Also Known As: Leukosialin, LSN, Sialophorin, SPN

RUO: For Research Use Only



Staining of C57BL/6 splenocytes with 0.25  $\mu$ g of Rat IgM  $\kappa$  Isotype Control PE (cat. 12-4341) (open histogram) or 0.25  $\mu$ g of Anti-Mouse CD43 PE (filled histogram). Cells in the lymphocyte gate were used for analysis.

### Product Information

Contents: Anti-Mouse CD43 PE


**REF** Catalog Number: 12-0431

Clone: eBioR2/60

Concentration: 0.2 mg/ml


Host/Isotype: Rat IgM

Formulation: aqueous buffer, 0.09% sodium azide, may contain carrier protein/stabilizer

 Temperature Limitation: Store at 2-8°C. Do not freeze. Light sensitive material.

**LOT** Batch Code: Refer to Vial

 Use By: Refer to Vial

 Caution, contains Azide

### Description

The eBioR2/60 monoclonal antibody reacts with mouse CD43, also known as leukosialin and sialophorin. CD43 has glycoforms of approximately 115 and 130 kDa, and is expressed by an early B cell subset in BM, thymocytes and mature T cells, NK cells, myeloid lineage cells and platelets. CD43 is reported to bind to CD54 and play a role in adhesion and B cell survival.

While the S7 and 1B11 monoclonal antibody clones detect only certain isoforms of CD43, data suggests that R2/60 detects the expression of both isoforms. It has been demonstrated that R2/60 stains the majority of CD4+ and CD8+ splenocytes, as well as a significant population of CD19+ splenocytes. However, the clones S7 and 1B11 stain only CD4+ and CD8+, or CD19+ splenocytes, respectively. This suggests that S7 and 1B11 recognize distinct epitopes which are differentially expressed by splenic B and T cells, whereas R2/60 recognizes an epitope shared by both isoforms of CD43.

### Applications Reported

This eBioR2/60 antibody has been reported for use in flow cytometric analysis.

### Applications Tested

This eBioR2/60 antibody has been tested by flow cytometric analysis of mouse splenocytes. This can be used at less than or equal to 0.5  $\mu$ g per test. A test is defined as the amount ( $\mu$ g) of antibody that will stain a cell sample in a final volume of 100  $\mu$ L. Cell number should be determined empirically but can range from  $10^5$  to  $10^8$  cells/test. It is recommended that the antibody be carefully titrated for optimal performance in the assay of interest.

### References

Bagriacik EU, Armstrong MD, Okabe M, Klein JR. Differential expression of CD43 isoforms on murine T cells and their relationship to acute intestinal graft versus host disease: studies using enhanced-green fluorescent protein transgenic mice. *Int Immunol*. 1999 Oct;11(10):1651-62. (R2/60, WB, FC, PubMed)

Sperling AI, Green JM, Mosley RL, Smith PL, DiPaolo RJ, Klein JR, Bluestone JA, Thompson CB. CD43 is a murine T cell costimulatory receptor that functions independently of CD28. *J Exp Med*. 1995 Jul 1;182(1):139-46. (R2/60, FC, WB, FA, PubMed)

### Related Products

12-4341 Rat IgM Isotype Control PE

Not for further distribution without written consent.

Copyright © 2000-2010 eBioscience, Inc.

Tel: 888.999.1371 or 858.642.2058 • Fax: 858.642.2046 • [www.eBioscience.com](http://www.eBioscience.com) • [info@eBioscience.com](mailto:info@eBioscience.com)