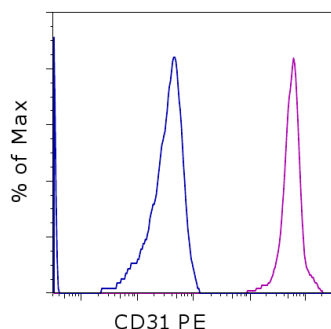


Anti-Human CD31 (PECAM-1) PE

Catalog Number: 12-0319

Also known as: Platelet-Endothelial Cell Adhesion Molecule 1

RUO: For Research Use Only. Not for use in diagnostic procedures.



Staining of normal human peripheral blood cells with Mouse IgG1 K Isotype Control PE (cat. 12-4714) (blue histogram) or Anti-Human CD31 (PECAM-1) PE (purple histogram). Cells in the monocyte gate were used for analysis.

Product Information



Contents: Anti-Human CD31 (PECAM-1) PE

Catalog Number: 12-0319

Clone: WM-59 (WM59)

Concentration: 5 μ L (0.125 μ g)/test

Host/Isotype: Mouse IgG1, kappa

HLDA Workshop: V P025



Formulation: aqueous buffer, 0.09% sodium azide, may contain carrier protein/stabilizer

Temperature Limitation: Store at 2-8°C. Do not freeze. Light sensitive material.

Batch Code: Refer to vial



Use By: Refer to vial

Caution, contains Azide

Description

The WM59 monoclonal antibody reacts with human CD31, also known as platelet-endothelial cell adhesion molecule-1 (PECAM-1) and gpIIa. This 130-140 kDa surface protein is expressed by endothelial cells and at low levels on leukocytes and platelets. It has been reported that CD38 binds to CD31. Homotypic interaction of CD31 is important in adhesion, cell-cell and cell-matrix interaction, and signal transduction.

Applications Reported

The WM-59 (WM59) antibody has been reported for use in flow cytometric analysis.

Applications Tested

This WM-59 (WM59) antibody has been pre-titrated and tested by flow cytometric analysis of human peripheral blood leukocytes. This can be used at 5 μ L (0.125 μ g) per test. A test is defined as the amount (μ g) of antibody that will stain a cell sample in a final volume of 100 μ L. Cell number should be determined empirically but can range from 10^5 to 10^8 cells/test.

References

Porat Y, Porozov S, Belkin D, Shimoni D, Fisher Y, Belleli A, Czeiger D, Silverman WF, Belkin M, Battler A, Fulga V, Savion N. Isolation of an adult blood-derived progenitor cell population capable of differentiation into angiogenic, myocardial and neural lineages. British Journal of Haematology 2006 (**WM-59**, ICC, PubMed)

Kishimoto, T., A.E.G., von dem Borne, et al. eds. (1998) Leucocyte Typing VI: White Cell Differentiation Antigens. Garland Publishing, Inc. London.

Schlossman, S., L. Bloumsell, et al. eds. 1995. Leucocyte Typing V: White Cell Differentiation Antigens. Oxford University Press. New York.

Related Products

12-4714 Mouse IgG1 K Isotype Control PE (P3.6.2.8.1)

Not for further distribution without written consent.

Copyright © 2000-2012 eBioscience, Inc.

Tel: 888.999.1371 or 858.642.2058 • Fax: 858.642.2046 • www.ebioscience.com • info@ebioscience.com

Anti-Human CD31 (PECAM-1) PE

Catalog Number: 12-0319

Also known as: Platelet-Endothelial Cell Adhesion Molecule 1

RUO: For Research Use Only. Not for use in diagnostic procedures.

Not for further distribution without written consent.

Copyright © 2000-2012 eBioscience, Inc.

Tel: 888.999.1371 or 858.642.2058 • Fax: 858.642.2046 • www.ebioscience.com •
info@ebioscience.com