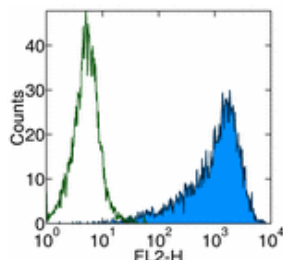


Anti-Human CD25 PE

Catalog Number: 12-0259

Also Known As: Interleukin-2 Receptor alpha, IL-2Ra, IL2Ra

RUO: For Research Use Only



Staining of PHA-stimulated normal human peripheral blood cells with Mouse IgG1 κ Isotype Control PE (cat. 12-4714) (open histogram) and Anti-Human CD25 PE (filled histogram). Total viable cells were used for analysis.

Product Information

Contents: Anti-Human CD25 PE

REF Catalog Number: 12-0259


Clone: BC96

Concentration: μ g size: 0.2 mg/ml; 5 μ l (0.125 μ g)/test

Host/Isotype: Mouse IgG1, κ


HLDA Workshop: V T-072

Formulation: aqueous buffer, 0.09% sodium azide, may contain carrier protein/stabilizer

 Temperature Limitation: Store at 2-8°C. Do not freeze. Light sensitive material.

LOT Batch Code: Refer to Vial

 Use By: Refer to Vial

 Caution, contains Azide

Description

The BC96 monoclonal antibody reacts with human CD25, the 55 kDa interleukin-2 receptor α chain (IL-2R α). CD25 is expressed by early progenitors of T and B lineage as well as by activated mature T and B lymphocytes. By itself, CD25 binds IL-2 only with low affinity. However, CD25 associates with CD122 (IL-2 receptor β chain) and CD132 (common γ chain) to form the high affinity IL-2 receptor. CD25 plays a role in lymphocyte differentiating and activation/proliferation.

Applications Reported

The BC96 antibody has been reported for use in flow cytometric analysis.

Applications Tested

The BC96 antibody is offered in 2 formats:

- μ g size: It can be used at less than or equal to 0.25 μ g per test. A test is defined as the amount (μ g)/test of antibody that will stain a cell sample in a final volume of 100 μ l. Cell number should be determined empirically but can range from 10^5 to 10^8 cells/test. It is recommended that the antibody be carefully titrated for optimal performance in the assay of interest.

- test size: has been pre-titrated and tested and can be used at 5 μ l (0.125 μ g)/per test. A test is defined as the amount (μ g)/test of antibody that will stain a cell sample in a final volume of 100 μ l. Cell number should be determined empirically but can range from 10^5 to 10^8 cells/test.

References

Schlossman, S., L. Bloumsell, et al. eds. (1995). Leucocyte Typing V: White Cell Differentiation Antigens. Oxford University Press. New York.

Related Products

12-4714 Mouse IgG1 K Isotype Control PE

Not for further distribution without written consent.

Copyright © 2000-2010 eBioscience, Inc.

Tel: 888.999.1371 or 858.642.2058 • Fax: 858.642.2046 • www.eBioscience.com • info@eBioscience.com