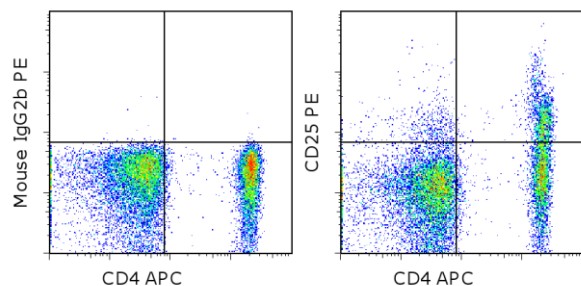


Anti-Human/Non-Human Primate CD25 PE

Catalog Number: 12-0257

Also known as: Interleukin-2 Receptor alpha, IL-2Ra

RUO: For Research Use Only. Not for use in diagnostic procedures.



Staining of normal human peripheral blood cells with Anti-Human CD4 APC (cat. 17-0049) and Mouse IgG2b K Isotype Control PE (cat. 12-4732) (left) or Anti-Human/Non-Human Primate CD25 PE (right). Cells in the lymphocyte gate were used for analysis.

Product Information

Contents: Anti-Human/Non-Human Primate CD25 PE

REF **Catalog Number:** 12-0257

Clone: CD25-4E3

Concentration: 5 uL (0.125 ug)/test

Host/Isotype: Mouse IgG2b

Formulation: aqueous buffer, 0.09% sodium azide, may contain carrier protein/stabilizer

Temperature Limitation: Store at 2-8°C. Do not freeze. Light sensitive material.

Batch Code: Refer to vial

Use By: Refer to vial

Contains sodium azide



Description

This CD25-4E3 monoclonal antibody reacts to human CD25, which is also known as the low-affinity interleukin (IL)-2 receptor alpha. CD25 is expressed on activated T cells (including a subset of regulatory T cells), B cells, and macrophages. This receptor subunit associates with CD122, the IL-2 receptor beta chain, and CD132, the common gamma chain, to form the high-affinity IL-2 receptor. IL-2 receptor signaling has been linked to cell proliferation and survival in lymphocytes. CD25 is a marker for Hodgkin's disease, and has been associated with such autoimmune diseases as Type I diabetes.

This monoclonal antibody is cross-reactive to rhesus monkey.

Applications Reported

This CD25-4E3 antibody has been reported for use in flow cytometric analysis.

Applications Tested

This CD25-4E3 antibody has been pre-titrated and tested by flow cytometric analysis of normal peripheral blood cells. This can be used at 5 µL (0.125 µg) per test. A test is defined as the amount (µg) of antibody that will stain a cell sample in a final volume of 100 µL. Cell number should be determined empirically but can range from 10⁵ to 10⁸ cells/test.

References

Wang J, Wicker LS, Santamaria P. IL-2 and its high-affinity receptor: genetic control of immunoregulation and autoimmunity. *Semin Immunol.* 2009 Dec;21(6):363-71.

Engert A, Martin G, Amlot P, Wijdenes J, Diehl V, Thorpe P. Immunotoxins constructed with anti-CD25 monoclonal antibodies and deglycosylated ricin A-chain have potent anti-tumour effects against human Hodgkin cells in vitro and solid Hodgkin tumours in mice. *Int J Cancer.* 1991 Sep 30;49(3):450-6. (CD25-4E3)

Related Products

Not for further distribution without written consent.

Copyright © 2000-2012 eBioscience, Inc.

Tel: 888.999.1371 or 858.642.2058 • Fax: 858.642.2046 • www.ebioscience.com •
info@ebioscience.com

Anti-Human/Non-Human Primate CD25 PE

Catalog Number: 12-0257

Also known as: Interleukin-2 Receptor alpha, IL-2Ra

RUO: For Research Use Only. Not for use in diagnostic procedures.

00-4222 Flow Cytometry Staining Buffer

12-4732 Mouse IgG2b K Isotype Control PE

17-0049 Anti-Human CD4 APC (RPA-T4)

48-4776 Anti-Human Foxp3 eFluor® 450 (PCH101)

Not for further distribution without written consent.

Copyright © 2000-2012 eBioscience, Inc.

Tel: 888.999.1371 or 858.642.2058 • Fax: 858.642.2046 • www.ebioscience.com •
info@ebioscience.com