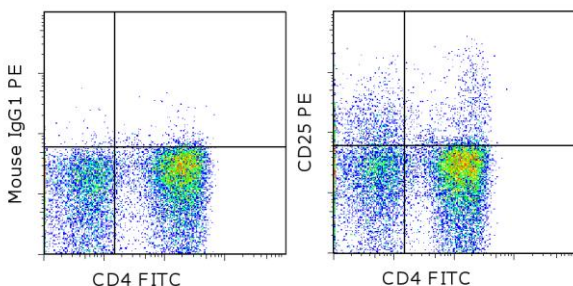


Anti-Canine CD25 PE

Catalog Number: 12-0250

Also known as: Interleukin-2 Receptor alpha

RUO: For Research Use Only. Not for use in diagnostic procedures.



Staining of normal canine peripheral blood cells with Anti-Canine CD4 FITC (cat. 11-5040) and Mouse IgG1 K Isotype Control PE (cat. 12-4714) (left) or Anti-Canine CD25 PE (right). Cells in the lymphocyte gate were used for analysis.

Product Information

Contents: Anti-Canine CD25 PE
Catalog Number: 12-0250
Clone: P4A10
Concentration: 5 μ L (0.25 μ g)/test
Host/Isotype: Mouse IgG1, kappa

REF

Formulation: aqueous buffer, 0.09% sodium azide, may contain carrier protein/stabilizer
Temperature Limitation: Store at 2-8°C. Do not freeze. Light-sensitive material.

Batch Code: Refer to vial

Use By: Refer to vial

Contains sodium azide



LOT



Description

This P4A10 monoclonal antibody reacts with canine CD25, the 55-kDa interleukin-2 receptor alpha (IL-2R α) chain. As in humans and mice, CD25 in dogs is expressed by early T and B lineage progenitors as well as by activated mature T and B lymphocytes. CD25 associates with the IL-2R beta (CD122) and gamma (CD132) chains to form the high-affinity IL-2 receptor. On its own, CD25 binds IL-2 with low affinity. Along with CD4 and Foxp3, CD25 is a major marker used to define regulatory T cells.

The P4A10 antibody has been reported to recognize the same epitope as the anti-human CD25 monoclonal antibody ACT-1, but with greater affinity.

Applications Reported

This P4A10 antibody has been reported for use in flow cytometric analysis.

Applications Tested

This P4A10 antibody has been pre-titrated and tested by flow cytometric analysis of normal canine peripheral blood cells. This can be used at 5 μ L (0.25 μ g) per test. A test is defined as the amount (μ g) of antibody that will stain a cell sample in a final volume of 100 μ L. Cell number should be determined empirically but can range from 10^5 to 10^8 cells/test.

References

Bismarck D, Schütze N, Moore P, Büttner M, Alber G, Buttlar HV. Canine CD4(+)CD8(+) double positive T cells in peripheral blood have features of activated T cells. *Vet Immunol Immunopathol.* 2012 Oct 15;149(3-4):157-66 (P4A10, FC, Pubmed)

Abrams VK, Hwang B, Lesnikova M, Gass MJ, Wayner E, Castilla-Llorente C, Georges GE, Nash RA. A novel monoclonal antibody specific for canine CD25 (P4A10): selection and evaluation of canine Tregs. *Vet Immunol Immunopathol.* 2010 Jun 15;135(3-4):257-65. (P4A10, FC, WB, Pubmed)

Not for further distribution without written consent.

Copyright © 2000-2012 eBioscience, Inc.

Tel: 888.999.1371 or 858.642.2058 • Fax: 858.642.2046 • www.ebioscience.com •
info@ebioscience.com

Anti-Canine CD25 PE

Catalog Number: 12-0250

Also known as: Interleukin-2 Receptor alpha

RUO: For Research Use Only. Not for use in diagnostic procedures.

Mizuno T, Suzuki R, Umeki S, Okuda M. Crossreactivity of antibodies to canine CD25 and Foxp3 and identification of canine CD4+CD25+Foxp3+ cells in canine peripheral blood. *J Vet Med Sci.* 2009 Dec;71(12):1561-8.

Helfand SC, Modiano JF, Nowell PC. Immunophysiological studies of interleukin-2 and canine lymphocytes. *Vet Immunol Immunopathol.* 1992 Jun;33(1-2):1-16.

Related Products

00-4300 10X RBC Lysis Buffer (Multi-species)

11-5040 Anti-Canine CD4 FITC (YKIX302.9)

12-4714 Mouse IgG1 K Isotype Control PE (P3.6.2.8.1)

Not for further distribution without written consent.

Copyright © 2000-2012 eBioscience, Inc.

Tel: 888.999.1371 or 858.642.2058 • Fax: 858.642.2046 • www.ebioscience.com •
info@ebioscience.com