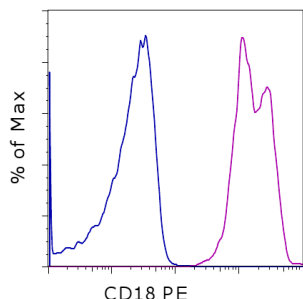


Anti-Human/Non-Human Primate CD18 PE

Catalog Number: 12-0189

Also known as: Integrin beta 2, ITGB2

RUO: For Research Use Only. Not for use in diagnostic procedures.



Staining of normal human peripheral blood cells with Mouse IgG1 kappa Isotype Control PE (cat. 12-4714) (blue histogram) or Anti-Human/Non-Human Primate CD18 PE (purple histogram). Cells in the lymphocyte gate were used for analysis.

Product Information

Contents: Anti-Human/Non-Human Primate CD18 PE

REF **Catalog Number:** 12-0189

Clone: 6.7

Concentration: 5 μ L (0.5 μ g)/test

Host/Isotype: Mouse IgG1, kappa

Formulation: aqueous buffer, 0.09% sodium azide, may contain carrier protein/stabilizer

Temperature Limitation: Store at 2-8°C. Do not freeze. Light-sensitive material.

Batch Code: Refer to vial

Use By: Refer to vial



LOT



Description

The 6.7 monoclonal antibody reacts with human and non-human primate (rhesus or cynomolgus) CD18, which is also known as β 2 integrin. CD18 is a 90-95 kDa type I transmembrane protein that heterodimerizes with the α chain of CD11a, CD11b and CD11c. The CD18/CD11a complex is also known as lymphocyte function-associated antigen-1 (LFA-1) and plays an important role in cellular adhesion and inflammatory reactions. CD18 is expressed broadly by human lymphocytes and monocytes. Peripheral blood granulocytes also express CD18, but at lower levels.

The 6.7 monoclonal antibody has been reported to induce the proliferation of resting T cells cultured with monocytes.

Applications Reported

This 6.7 antibody has been reported for use in flow cytometric analysis.

Applications Tested

This 6.7 antibody has been pre-titrated and tested by flow cytometric analysis of normal human peripheral blood cells. This can be used at 5 μ L (0.5 μ g) per test. A test is defined as the amount (μ g) of antibody that will stain a cell sample in a final volume of 100 μ L. Cell number should be determined empirically but can range from 10^5 to 10^8 cells/test.

References

Caldas C, Coelho V, Kalil J, Moro AM, Maranhão AQ, Brígido MM. Isolation of the anti-CD18 antibody 6.7: an unexpected effect of a framework residue in binding to antigen. *Mol Immunol*. 2003 May;39(15):941-52. (6.7, FC)

David V, Leca G, Corvaia N, Le Deist F, Boumsell L, Bensussan A. Proliferation of resting lymphocytes is induced by triggering T cells through an epitope common to the three CD18/CD11 leukocyte adhesion molecules. *Cell Immunol*. 1991 Sep;136(2):519-24. (6.7, FG)

Reinherz, E. L., B. F. Haynes, L. M. Nadler, I. D. Bernstein eds. 1986. *Leukocyte Typing II*, Springer-Verlag Inc., New York.

Not for further distribution without written consent.

Copyright © 2000-2012 eBioscience, Inc.

Tel: 888.999.1371 or 858.642.2058 • Fax: 858.642.2046 • www.ebioscience.com •
info@ebioscience.com

Anti-Human/Non-Human Primate CD18 PE

Catalog Number: 12-0189

Also known as: Integrin beta 2, ITGB2

RUO: For Research Use Only. Not for use in diagnostic procedures.

Related Products

12-4714 Mouse IgG1 K Isotype Control PE (P3.6.2.8.1)