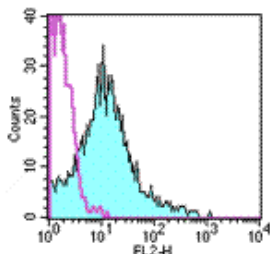


Anti-Mouse CD18 PE

Catalog Number: 12-0181

Also Known As: Integrin beta 2, ITGB2

RUO: For Research Use Only. Not for use in diagnostic procedures.



Staining of BALB/c splenocytes with staining buffer (autofluorescence) (open histogram) or 0.5 µg of Anti-Mouse CD18 PE (filled histogram). Total viable cells were used for analysis.

Product Information

Contents: Anti-Mouse CD18 PE

REF **Catalog Number:** 12-0181

Clone: M18/2

Concentration: 0.2 mg/mL

Host/Isotype: Rat IgG2a, kappa

Formulation: aqueous buffer, 0.09% sodium azide, may contain carrier protein/stabilizer



Temperature Limitation: Store at 2-8°C. Do not freeze. Light sensitive material.



Batch Code: Refer to Vial



Use By: Refer to Vial



Caution, contains Azide

Description

The M18/2 monoclonal antibody reacts with mouse CD18, the 90-95 kDa integrin beta 2 glycoprotein. CD18 is the common β subunit that non-covalently associates with CD11a (alpha L), CD11b (alpha M) and CD11c (alpha X) to form LFA-1, Mac-1 and gp150/95. Heterodimers of CD18 and the α subunits are expressed broadly by all leukocytes with NK and T cells showing higher density of surface expression. Through the interactions of LFA-1, Mac-1 and gp150/95 with their counter-receptors, CD18 is involved in cellular adhesion and the immune response.

Applications Reported

The M18/2 antibody has been reported for use in flow cytometric analysis.

Applications Tested

The M18/2 antibody has been tested by flow cytometric analysis of mouse splenocyte and bone marrow cell suspensions. This can be used at less than or equal to 1.0 µg per test. A test is defined as the amount (µg) of antibody that will stain a cell sample in a final volume of 100 µL. Cell number should be determined empirically but can range from 10^5 to 10^8 cells/test. It is recommended that the antibody be carefully titrated for optimal performance in the assay of interest.

References

Sanchez-Madrid, F., P. Simon, et al. Mapping of antigenic and functional epitopes on the alpha- and beta-subunits of two related mouse glycoproteins involved in cell interactions, LFA-1 and Mac-1. J Exp Med 1983. 158(2): 586-602.

Related Products

12-4321 Rat IgG2a K Isotype Control PE (eBR2a)

Not for further distribution without written consent.

Copyright © 2000-2010 eBioscience, Inc.

Tel: 888.999.1371 or 858.642.2058 • Fax: 858.642.2046 • www.eBioscience.com • info@eBioscience.com