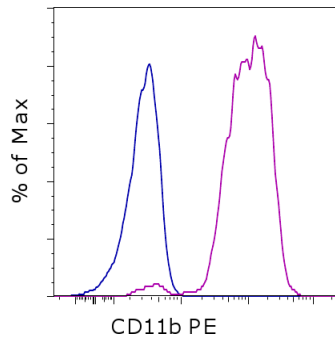


## Anti-Human CD11b PE

**Catalog Number:** 12-0118

**Also known as:** Integrin alpha M, ITGAM, Mac-1 alpha (Mac1A), Complement Receptor 3 alpha (CR3A)

**RUO: For Research Use Only. Not for use in diagnostic procedures.**



Staining of normal human peripheral blood cells with Mouse IgG1 kappa Isotype Control PE (cat. 12-4714) (blue histogram) or Anti-Human CD11b PE (purple histogram). Cells in the monocyte gate were used for analysis.

### Product Information



**Contents:** Anti-Human CD11b PE

**Catalog Number:** 12-0118

**Clone:** ICRF44

**Concentration:** 5 uL (0.5 ug)/test

**Host/Isotype:** Mouse IgG1, kappa

**HLDA Workshop:** IV M047



**Formulation:** aqueous buffer, 0.09% sodium azide, may contain carrier protein/stabilizer

**Temperature Limitation:** Store at 2-8°C. Do not freeze. Light sensitive material.

**Batch Code:** Refer to vial

**Use By:** Refer to vial

**Caution, contains Azide**

### Description

The ICRF44 monoclonal antibody reacts with human CD11b, a 165 kDa adhesion molecule. CD11b associated with integrin beta2 (CD18) is expressed on the surface of monocytes, granulocytes, activated lymphocytes and a subset of NK cells. CD11b is a receptor for intercellular adhesion molecule family members CD54, CD102 and CD50 as well as for iC3b. These adhesions are crucial in cell-cell and cell-matrix interactions.

### Applications Reported

The ICRF44 antibody has been reported for use in flow cytometric analysis.

### Applications Tested

The ICRF44 antibody has been pre-titrated and tested by flow cytometric analysis of human peripheral blood leukocytes. This can be used at 5 µl (0.5 µg)/per test. A test is defined as the amount (µg)/test of antibody that will stain a cell sample in a final volume of 100 µL. Cell number should be determined empirically but can range from 10<sup>5</sup> to 10<sup>8</sup> cells/test.

### References

Moreau A, Hill M, Thébault P, Deschamps JY, Chiffolleau E, Chauveau C, Moullier P, Anegon I, Alliot-Licht B, Cuturi MC Tolerogenic dendritic cells actively inhibit T cells through heme oxygenase-1 in rodents and in nonhuman primates. *FASEB J.* 2009 May 6. (FC, Cynomolgus macaques)

Sotiriou SN, Orlova VV, Al-Fakhri N, Ihanus E, Economopoulou M, Isermann B, Bdeir K, Nawroth PP, Preissner KT, Gahmberg CG, Koschinsky ML, Chavakis T. Lipoprotein(a) in atherosclerotic plaques recruits inflammatory cells through interaction with Mac-1 integrin. *FASEB J.* 2006 Mar;20(3):559-61. (ICRF44, IHC, frozen)

Sengoku K, Takuma N, Miyamoto T, Horikawa M, Ishikawa M. Integrins are not involved in the process of human sperm-olemmal fusion. *Hum Reprod.* 2004 Mar;19(3):639-44. (ICRF44, IF, PFA fixed)

Knapp, W., B. Dorken, et al. eds. (1989). *Leucocyte Typing IV: White Cell Differentiation Antigens.* Oxford University

Not for further distribution without written consent.

Copyright © 2000-2012 eBioscience, Inc.

Tel: 888.999.1371 or 858.642.2058 • Fax: 858.642.2046 • [www.ebioscience.com](http://www.ebioscience.com) •  
[info@ebioscience.com](mailto:info@ebioscience.com)

---

## Anti-Human CD11b PE

**Catalog Number:** 12-0118

**Also known as:** Integrin alpha M, ITGAM, Mac-1 alpha (Mac1A), Complement Receptor 3 alpha (CR3A)

**RUO: For Research Use Only. Not for use in diagnostic procedures.**

---

Press. New York.

### Related Products

11-0112 Anti-Mouse CD11b FITC (M1/70)

12-4714 Mouse IgG1 K Isotype Control PE (P3.6.2.8.1)

---

Not for further distribution without written consent.

Copyright © 2000-2012 eBioscience, Inc.

Tel: 888.999.1371 or 858.642.2058 • Fax: 858.642.2046 • [www.ebioscience.com](http://www.ebioscience.com) •  
[info@ebioscience.com](mailto:info@ebioscience.com)