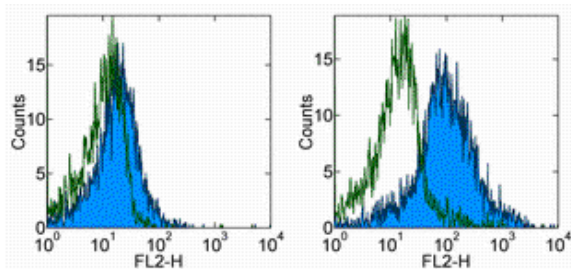


Anti-Human CD11b (activation epitope) PE

Catalog Number: 12-0113

Also Known As: Integrin alpha M, Mac-1 alpha, Complement Receptor 3 alpha (CR3A)

RUO: For Research Use Only. Not for use in diagnostic procedures.



Staining of unstimulated (left) or 10-minute Manganese-stimulated (1 mM) (right) human peripheral blood cells with Mouse IgG1 kappa Isotype Control PE (cat. 12-4714) (open histogram) or Anti-Human CD11b PE (filled histogram). Cells in the monocyte gate were used for analysis.

Product Information

Contents: Anti-Human CD11b (activation epitope) PE


REF **Catalog Number:** 12-0113

Clone: CBRM1/5

Concentration: 5 μ L (0.25 μ g)/test


Host/Isotype: Mouse IgG1, kappa

Formulation: aqueous buffer, 0.09% sodium azide, may contain carrier protein/stabilizer

 **Temperature Limitation:** Store at 2-8°C. Do not freeze. Light sensitive material.

LOT **Batch Code:** Refer to Vial

 **Use By:** Refer to Vial

 **Caution, contains Azide**

Description

The CBRM1/5 monoclonal antibody reacts with an activation-specific epitope of human Mac-1. CBRM1/5 binds a subset of Mac-1 molecules on neutrophils and monocytes after stimulation with chemoattractants or phorbol esters but does not recognize Mac-1 on resting myeloid cells. Through interactions with its ligands, Mac-1 participates in adhesive cell interactions. The epitope recognized by this mAb localizes to the I domain on the α chain of Mac-1 very close to the ligand binding site in a region that is widely exposed. CBRM1/5 blocks Mac-1 dependent adhesion to fibrinogen and ICAM-1 and inhibits chemoattractant-stimulated adhesion of eosinophils to the Intercellular Adhesion Molecule-1 (ICAM-1). It should be noted that low level activation may occur during processing of freshly drawn blood. Therefore the CBRM1.5 antibody may exhibit some binding to Mac-1 in these unstimulated samples. However, higher levels of Mac-1 expression are observed in activated samples when compared to unstimulated cells.

Applications Reported

The CBRM1/5 antibody has been reported for use in flow cytometric analysis.

Applications Tested

This CBRM1/5 antibody has been pre-titrated and tested by flow cytometric analysis of resting and activated human peripheral leukocytes. This can be used at 5 μ L (0.25 μ g) per test. A test is defined as the amount (μ g) of antibody that will stain a cell sample in a final volume of 100 μ L. Cell number should be determined empirically but can range from 10^5 to 10^8 cells/test.

References

Oxvig C, Lu C, Springer TA. Conformational changes in tertiary structure near the ligand binding site of an integrin I domain. Proc Natl Acad Sci U S A. 1999 Mar 2;96(5):2215-20.

Weber C, Kitayama J, Springer TA. Differential regulation of beta 1 and beta 2 integrin avidity by chemoattractants in eosinophils Proc Natl Acad Sci U S A. 1996 Oct 1;93(20):10939-44.

Diamond MS, Springer TA. A subpopulation of Mac-1 (CD11b/CD18) molecules mediates neutrophil adhesion to ICAM-1 and fibrinogen. J Cell Biol. 1993 Jan;120(2):545-56.

Related Products

12-0112 Anti-Mouse CD11b PE (M1/70)

12-4714 Mouse IgG1 K Isotype Control PE (P3.6.2.8.1)

