

Product Data Sheet

FITC anti-mouse CD22

Catalog # / Size: 126105 / 50 µg
126106 / 500 µg

Clone: OX-97

Isotype: Rat IgG1, κ

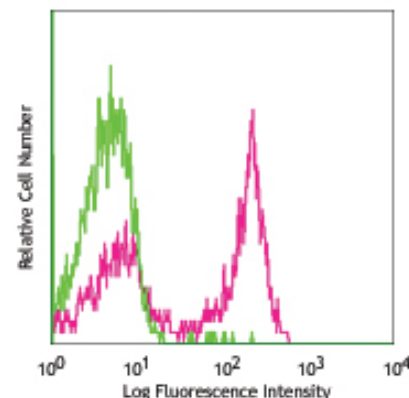
Reactivity: Mouse

Preparation: The antibody was purified by affinity chromatography, and conjugated with FITC under optimal conditions. The solution is free of unconjugated FITC.

Formulation: Phosphate-buffered solution, pH 7.2, containing 0.09% sodium azide

Concentration: 0.5 mg/ml

Storage: The antibody solution should be stored undiluted at 4°C and protected from prolonged exposure to light. **Do not freeze.**



C57BL/6 splenocytes stained with OX-97 FITC

Applications:

Applications: FC Quality tested

Recommended Usage: Each lot of this antibody is quality control tested by immunofluorescent staining with flow cytometric analysis. For immunofluorescent staining, the suggested use of this reagent is ≤ 0.25 µg per 10⁶ cells in 100 µl. It is recommended that the reagent be titrated for optimal performance for each application.

Description: CD22 is a member of the sialoadhesion family. CD22 is expressed on the surface of a subpopulation of mature B lymphocytes and may modulate signaling through the B cell antigen receptor. The OX-97 monoclonal antibody recognizes the second domain of the CD22.

Antigen References: 1. Symington FW *et al.* 1982. *Immunogenetics* 16:381
2. Erickson LD *et al.* 1996. *Int Immunol* 8:1121
3. Doody GM *et al.* 1995. *Science* 269:242

Related Products:

Product	Clone	Application
FITC Rat IgG1, κ Isotype Ctrl	RTK2071	FC, ICFC
Cell Staining Buffer		FC, ICC, ICFC
RBC Lysis Buffer (10X)		FC, ICFC
TruStain fcX™ (anti-mouse CD16/32)	93	FC



For research use only. Not for diagnostic use. Not for resale. BioLegend will not be held responsible for patent infringement or other violations that may occur with the use of our products.



*These products may be covered by one or more Limited Use Label Licenses (see the BioLegend Catalog or our website, www.biollegend.com/ordering#license). BioLegend products may not be transferred to third parties, resold, modified for resale, or used to manufacture commercial products, reverse engineer functionally similar materials, or to provide a service to third parties without written approval of BioLegend. By use of these products you accept the terms and conditions of all applicable Limited Use Label Licenses. Unless otherwise indicated, these products are for research use only and are not intended for human or animal diagnostic, therapeutic or commercial use.