

Product Data Sheet

PE/Cy7 anti-mouse CD21/CD35 (CR2/CR1)

Catalog # / Size: 123419 / 25 µg
123420 / 100 µg

Clone: 7E9

Isotype: Rat IgG2a, κ

Immunogen: CD35/CFA

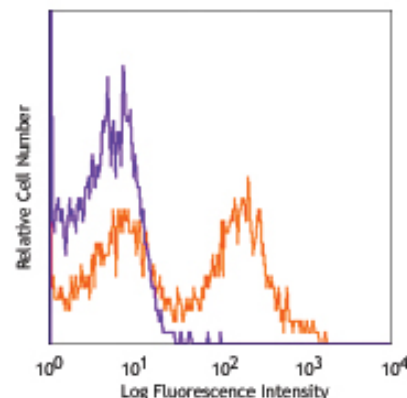
Reactivity: Mouse

Preparation: The antibody was purified by affinity chromatography, and conjugated with PE/Cy7 under optimal conditions. The solution is free of unconjugated PE/Cy7 and unconjugated antibody.

Formulation: Phosphate-buffered solution, pH 7.2, containing 0.09% sodium azide.

Concentration: 0.2 mg/ml

Storage: The antibody solution should be stored undiluted at 4°C and protected from prolonged exposure to light. **Do not freeze.**



C57BL/6 mouse splenocytes stained with 7E9 PE/Cy7

Applications:

Applications: FC - Quality tested

Recommended Usage: Each lot of this antibody is quality control tested by immunofluorescent staining with flow cytometric analysis. For immunofluorescent staining, the suggested use of this reagent is ≤ 0.25 µg per 10⁶ cells in 100 µl volume. It is recommended that the reagent be titrated for optimal performance for each application.

Cy3, Cy5, Cy5.5 and Cy7 are subject to proprietary rights of GE Healthcare Bio-Sciences Corp. and Carnegie Mellon University and made and sold under license from GE Healthcare Bio-Sciences Corp. Sale of this product is licensed for research use only.

Application References: 1. Boackle S, *et al.* 2001 *Immunity* 15:775.

Description: CD21, also known as CR2 (complement receptor 2) and C3d receptor, binds C3d and iC3b. It is also a receptor of Epstein-Barr virus. CD35, also known as CR1, binds C3b, iC3b, C4b, and iC4b. CD21/CD35 is primarily expressed on B lymphocytes, mast cells, follicular dendritic cells, macrophages, and activated granulocytes. CD21/CD35 forms part of the B-cell antigen receptor complex with CD19 and CD81 and is involved in signal transduction.

Antigen References: 1. Kozono Y, *et al.* 1998. *J. Immunol.* 160:1562.
2. Shimizu I, *et al.* 2007. *Blood* 109:1773.
3. Roozendaal R and MC. Carroll. 2007. *Immunol. Rev.* 219:157.

Related Products:	Product	Clone	Application
	PE/Cy7 Rat IgG2a, κ Isotype Ctrl	RTK2758	FC, ICFC
	Cell Staining Buffer		FC, ICC, ICFC
	RBC Lysis Buffer (10X)		FC, ICFC
	TruStain fcX™ (anti-mouse CD16/32)	93	FC



For research use only. Not for diagnostic use. Not for resale. BioLegend will not be held responsible for patent infringement or other violations that may occur with the use of our products.



*These products may be covered by one or more Limited Use Label Licenses (see the BioLegend Catalog or our website, www.biollegend.com/ordering#license). BioLegend products may not be transferred to third parties, resold, modified for resale, or used to manufacture commercial products, reverse engineer functionally similar materials, or to provide a service to third parties without written approval of BioLegend. By use of these products you accept the terms and conditions of all applicable Limited Use Label Licenses. Unless otherwise indicated, these products are for research use only and are not intended for human or animal diagnostic, therapeutic or commercial use.