

APC anti-mouse CD14

Catalog # / Size: 123311 / 25 µg
123312 / 100 µg

Clone: Sa14-2

Isotype: Rat IgG2a, κ

Immunogen: Mouse thymus or spleen

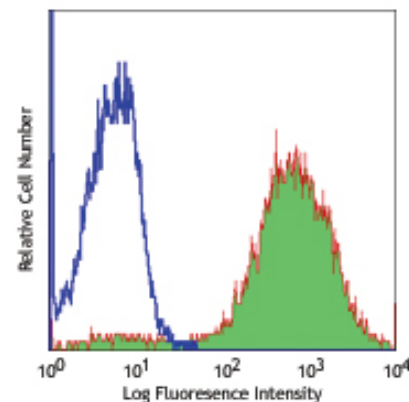
Reactivity: Mouse

Preparation: The antibody was purified by affinity chromatography, and conjugated with APC under optimal conditions. The solution is free of unconjugated APC and unconjugated antibody.

Formulation: Phosphate-buffered solution, pH 7.2, containing 0.09% sodium azide.

Concentration: 0.2 mg/ml

Storage: The antibody solution should be stored undiluted at 4°C and protected from prolonged exposure to light. **Do not freeze.**



Thioglycolate-elicited Balb/c mouse peritoneal macrophages stained with Sa14-2 APC

Applications:

Applications: FC - Quality tested

Recommended Usage: Each lot of this antibody is quality control tested by immunofluorescent staining with flow cytometric analysis. For immunofluorescent staining, the suggested use of this reagent is ≤0.25 µg per million cells in 100 µl volume. It is recommended that the reagent be titrated for optimal performance for each application.

Application References: 1. Zietara N, *et al.* 2013. *PNAS*. 110:2282. PubMed.
2. Wang Y, *et al.* 2013. *Am J Physiol Lung Cell Mol Physiol*. 304:298. PubMed.

Description: CD14 is a 53-55 kD glycosylphosphatidylinositol (GPI)-linked membrane glycoprotein also known as LPS receptor. CD14 is expressed on macrophages, dendritic cells, Kupffer cells, hepatocytes, and granulocytes. As a high-affinity receptor for LPS-LBP (LPS-binding protein) complex, CD14, in association with Toll-like Receptor 4 (TLR4) or 2 (TLR2), is involved in the clearance of gram-negative pathogens.

Antigen References: 1. Stocks S, *et al.* 1990. *Biochem. J.* 268:275.
2. Akashi S, *et al.* 2003. *J. Exp. Med.* 198:1035.
3. Matsuura K, *et al.* 1994. *J. Exp. Med.* 179:1671.
4. Liu S, *et al.* 1998. *Infect. Immun.* 66:5089.

Related Products:

Product
Cell Staining Buffer
APC Rat IgG2a, κ Isotype Ctrl
TruStain fcX™ (anti-mouse CD16/32)

Clone

RTK2758
93

Application

FC, ICC, ICFC
FC, ICFC
FC



For research use only. Not for diagnostic use. Not for resale. BioLegend will not be held responsible for patent infringement or other violations that may occur with the use of our products.



*These products may be covered by one or more Limited Use Label Licenses (see the BioLegend Catalog or our website, www.biolegend.com/ordering#license). BioLegend products may not be transferred to third parties, resold, modified for resale, or used to manufacture commercial products, reverse engineer functionally similar materials, or to provide a service to third parties without written approval of BioLegend. By use of these products you accept the terms and conditions of all applicable Limited Use Label Licenses. Unless otherwise indicated, these products are for research use only and are not intended for human or animal diagnostic, therapeutic or commercial use.