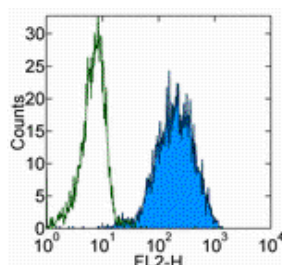


Anti-Human CD10 PE

Catalog Number: 12-0106

Also Known As: Common Acute Lymphocytic Leukemia antigen (CALLA), Neprilysin,

RUO: For Research Use Only. Not for use in diagnostic procedures.



Staining of normal human peripheral blood cells with Mouse IgG2b kappa Isotype Control PE (cat. 12-4732) (open histogram) or Anti-Human CD10 PE (filled histogram). Cells in the granulocyte gate were used for analysis.

Product Information

Contents: Anti-Human CD10 PE

REF **Catalog Number:** 12-0106

Clone: eBioCB-CALLA (CB-CALLA)


Concentration: 5 μ L (0.06 μ g)/test

Host/Isotype: Mouse IgG2b

Formulation: aqueous buffer, 0.09% sodium azide, may contain carrier protein/stabilizer

 **Temperature Limitation:** Store at 2-8°C. Do not freeze. Light sensitive material.

LOT **Batch Code:** Refer to Vial

 **Use By:** Refer to Vial

 **Caution, contains Azide**

Description

The eBioCB-CALLA monoclonal antibody recognizes human CD10 (CALLA, NEP, enkephalinase, Neprilysin), which is a 100 kDa, type II cell surface glycoprotein originally identified for its expression on most acute lymphoblastic leukemias (ALL). Subsequently, CD10 was shown to be the same molecule as the neutral endopeptidase (NEP), or KII-NA. CD10 is a Zn²⁺-dependent metallo-peptidase with endothelin, glucagon, gastrin, neurotensin and bradykinin included among its substrates. CD10 is involved in the regulation of chemotactic and inflammatory processes involving neutrophils. In B cells, CD10 regulates stromal cell-dependent B lymphopoiesis and expression has also been reported on mature B cells in germinal centres. In addition to the hematopoietic compartment, other major sites of CD10 expression are the brush border of enterocytes and renal tubules and glomeruli. There is partial blocking of the eBioCB-CALLA and MEM-78 monoclonal antibodies indicating that they recognize similar epitopes.

Applications Reported

This eBioCB-CALLA (CB-CALLA) antibody has been reported for use in flow cytometric analysis.

Applications Tested

This eBioCB-CALLA (CB-CALLA) antibody has been pre-titrated and tested by flow cytometric analysis of normal human peripheral blood leukocytes. This can be used at 5 μ L (0.06 μ g) per test. A test is defined as the amount (μ g) of antibody that will stain a cell sample in a final volume of 100 μ L. Cell number should be determined empirically but can range from 10⁵ to 10⁸ cells/test.

References

Ritz J, Pesando JM, Notis-McConarty J, Lazarus H, Schlossman SF. A monoclonal antibody to human acute lymphoblastic leukaemia antigen. *Nature*. 1980 Feb 7;283(5747):583-5.

McCormack RT, Nelson RD, LeBien TW. Structure/function studies of the common acute lymphoblastic leukemia antigen (CALLA/CD10) expressed on human neutrophils. *J Immunol*. 1986 Aug 1;137(3):1075-82.

Pesando JM, Tomaselli KJ, Lazarus H, Schlossman SF. Distribution and modulation of a human leukemia-associated antigen (CALLA). *J Immunol*. 1983 Oct;131(4):2038-45.

Related Products

12-4732 Mouse IgG2b K Isotype Control PE

Not for further distribution without written consent.

Copyright © 2000-2010 eBioscience, Inc.

Tel: 888.999.1371 or 858.642.2058 • Fax: 858.642.2046 • www.eBioscience.com • info@eBioscience.com