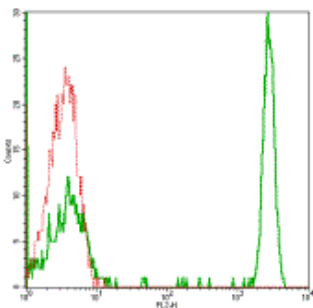


## Anti-Human CD4 PE

Catalog Number: 12-0049

Also Known As: Leu-3, T4


RUO: For Research Use Only



Staining of normal human peripheral blood cells with Mouse IgG1  $\kappa$  Isotype Control PE (cat. 12-4714) (red histogram) or Anti-Human CD4 PE (green histogram).

### Product Information

Contents: Anti-Human CD4 PE

 Catalog Number: 12-0049


Clone: RPA-T4


Concentration:  $\mu\text{g}$  size: 0.2 mg/ml; test size: 5  $\mu\text{l}$  (0.5  $\mu\text{g}$ )/test

Host/Isotype: Mouse IgG1,  $\kappa$


HLDA Workshop: IV T114

Formulation: aqueous buffer, 0.09% sodium azide, may contain carrier protein/stabilizer

 Temperature Limitation: Store at 2-8°C. Do not freeze. Light sensitive material.

 Batch Code: Refer to Vial

 Use By: Refer to Vial

 Caution, contains Azide

### Description

The RPA-T4 monoclonal antibody reacts with human CD4, a 59 kDa cell surface receptor expressed by a majority of thymocytes, subpopulation of mature T cells (T-helper cells) and in low levels on monocytes. CD4 is a receptor for the human immunodeficiency virus (HIV). RPA-T4 blocks HIV binding and mixed lymphocyte reaction. The RPA-T4 antibody recognizes a different epitope than the OKT4 monoclonal antibody, and these antibodies do not cross-block binding to each other's respective epitopes.

### Applications Reported

The RPA-T4 antibody has been reported for use in flow cytometric analysis.

### Applications Tested

The FITC conjugated RPA-T4 is offered in 2 formats:

-  $\mu\text{g}$  size: has been tested by flow cytometric analysis and can be used at less than or equal to 1  $\mu\text{g}$  per test. A test is defined as the amount ( $\mu\text{g}$ )/test of antibody that will stain a cell sample in a final volume of 100  $\mu\text{L}$ . Cell number should be determined empirically but can range from  $10^5$  to  $10^8$  cells/test. It is recommended that the antibody be carefully titrated for optimal performance in the assay of interest.

- test size: has been pre-titrated and tested by flow cytometric analysis and can be used at 5  $\mu\text{l}$  (0.5  $\mu\text{g}$ )/per test The pre-titrated test size contains 0.2% BSA.

### References

Knapp, W., B. Dorken, et al. eds. (1989). Leucocyte Typing IV: White Cell Differentiation Antigens. Oxford University Press. New York.

### Related Products

12-4714 Mouse IgG1 K Isotype Control PE

Not for further distribution without written consent.

Copyright © 2000-2010 eBioscience, Inc.

Tel: 888.999.1371 or 858.642.2058 • Fax: 858.642.2046 • www.eBioscience.com • info@eBioscience.com