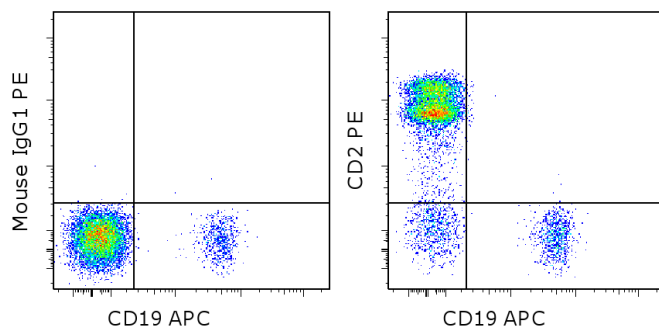


Anti-Human/Non-Human Primate CD2 PE

Catalog Number: 12-0029

Also known as: LFA-2, Ly-37

RUO: For Research Use Only. Not for use in diagnostic procedures.



Staining of normal human peripheral blood cells with Anti-Human CD19 APC (cat. 17-0199) and Mouse IgG1 K Isotype Control PE (cat. 12-4714) (left) or Anti-Human/Non-Human Primate CD2 PE (right). Cells in the lymphocyte gate were used for analysis.

Product Information

Contents: Anti-Human/Non-Human Primate CD2 PE



Catalog Number: 12-0029

Clone: RPA-2.10

Concentration: 5 μ L (0.125 μ g)/test

Host/Isotype: Mouse IgG1, kappa

HLDA Workshop: IV T085



Formulation: aqueous buffer, 0.09% sodium azide, may contain carrier protein/stabilizer

Temperature Limitation: Store at 2-8°C. Do not freeze. Light sensitive material.

Batch Code: Refer to vial



Use By: Refer to vial

Contains sodium azide

Description

The RPA-2.10 monoclonal antibody reacts with human CD2, a 50 kDa cell surface receptor expressed by a majority of thymocytes, all mature T cells and subset of NK cells. CD2 is a ligand for CD58 in the human and is involved in adhesion and activation of T cells. RPA-2.10 blocks mixed lymphocyte reaction.

RPA-2.10 crossreacts to non-human primates and pigs.

Applications Reported

The RPA-2.10 antibody has been reported for use in flow cytometric analysis.

Applications Tested

This RPA-2.10 antibody has been pre-titrated and tested by flow cytometric analysis of human peripheral blood leukocytes. This can be used at 5 μ L (0.125 μ g) per test. A test is defined as the amount (μ g) of antibody that will stain a cell sample in a final volume of 100 μ L. Cell number should be determined empirically but can range from 10^5 to 10^8 cells/test.

References

Kap YS, van Meurs M, van Driel N, Koopman G, Melief MJ, Brok HP, Laman JD, 't Hart BA. A monoclonal antibody selection for immunohistochemical examination of lymphoid tissues from non-human primates. J Histochem Cytochem. 2009 Dec;57(12):1159-67. (RPA-2.10, IHC frozen, primate, PubMed)

Knapp, W., B. Dorken, et al. eds. (1989). Leucocyte Typing IV: White Cell Differentiation Antigens. Oxford University Press. New York.

Aversa GG, Bishop GA, Suranyi MG, Hall BM. (1987). RPA-2.10: an anti-CD2 monoclonal antibody that inhibits alloimmune responses and monitors T cell activation. Transplant Proc. 19:277-8

Related Products

Not for further distribution without written consent.

Copyright © 2000-2012 eBioscience, Inc.

Tel: 888.999.1371 or 858.642.2058 • Fax: 858.642.2046 • www.ebioscience.com • info@ebioscience.com

Anti-Human/Non-Human Primate CD2 PE

Catalog Number: 12-0029

Also known as: LFA-2, Ly-37

RUO: For Research Use Only. Not for use in diagnostic procedures.

12-4714 Mouse IgG1 K Isotype Control PE (P3.6.2.8.1)

17-0199 Anti-Human CD19 APC (HIB19)

Not for further distribution without written consent.

Copyright © 2000-2012 eBioscience, Inc.

Tel: 888.999.1371 or 858.642.2058 • Fax: 858.642.2046 • www.ebioscience.com •
info@ebioscience.com