

Biotin anti-mouse CD1d (CD1.1, Ly-38)

Catalog # / Size: 123505 / 50 µg
123506 / 500 µg

Clone: 1B1

Isotype: Rat IgG2b, κ

Immunogen: Mouse Cd1.1 cDNA-transfected RMA-S mouse T lymphoma

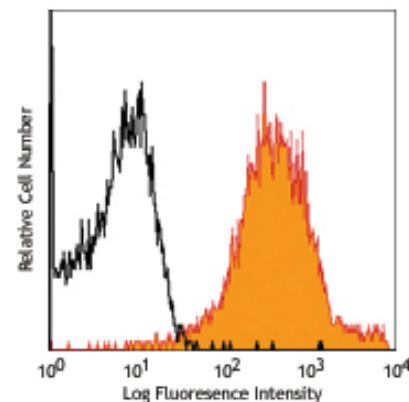
Reactivity: Mouse

Preparation: The antibody was purified by affinity chromatography, and conjugated with biotin under optimal conditions. The solution is free of unconjugated biotin.

Formulation: Phosphate-buffered solution, pH 7.2, containing 0.09% sodium azide.

Concentration: 0.5 mg/ml

Storage: The antibody solution should be stored undiluted at 4°C. **Do not freeze.**



C57BL/6 mouse splenocytes stained with biotinylated 1B1, followed by Sav-PE

Applications:

Applications: FC - *Quality tested*
IHC - *Reported in the literature*

Recommended Usage: Each lot of this antibody is quality control tested by immunofluorescent staining with flow cytometric analysis. For immunofluorescent staining, the suggested use of this reagent is ≤0.25 µg per million cells in 100 µl volume. It is recommended that the reagent be titrated for optimal performance for each application.

Application Notes: Additional reported applications (for the relevant formats) include: immunoprecipitation, immunohistochemical staining, and blocking function³.

This product is for research use only and is not to be used for commercial purposes. Use of this product to produce products for sale or for diagnostic, therapeutic or drug discovery purposes is prohibited. In order to obtain a license to use this product for commercial purposes, contact the Regents of the University of California.

Application References:

1. Fischer K, *et al.* 2004. *P. Natl. Acad. Sci. USA* 101:10685. (Block)
2. Brozovic S, *et al.* 2004. *Nat. Med.* 10:535.
3. Brossay L, *et al.* 1997. *J. Immunol.* 159:1216. (Block)

Description: CD1d, known as CD1.1 and Ly-38, is a 48 kD type I membrane glycoprotein with structural similarities to MHC class I and is non-covalently associated with β2-microglobulin. In humans, CD1 family consists of group I proteins (CD1a, CD1b, and CD1c), group II (CD1d), and group III (CD1e). But CD1d is the only CD1 molecule has been found in mouse. Mouse CD1d has broad tissue distribution, and is found on leukocytes, dendritic cells, epithelial cells, and thymocytes. CD1d plays a role in non-peptide glycolipid antigen presentation to CD1d-restricted T cells. It has been shown that PKCδ is a critical regulator of CD1d-mediated antigen presentation.

Antigen References:

1. Brudin N, *et al.* 1998. *J. Immunol.* 161:3271.
2. Amano M, *et al.* 1998. *J. Immunol.* 161:1710.
3. Brossay L, *et al.* 1997. *J. Immunol.* 159:1216.
4. Dougan SK, *et al.* 2007. *Curr. Top. Microbiol. Immunol.* 314:113.
5. Brutkiewicz RR, *et al.* 2007. *Eur. J. Immunol.* 37:2390.

Related Products:	Product	Clone	Application
	APC Streptavidin		FC, ICFC
	APC/Cy7 Streptavidin		FC, ICFC
	FITC Streptavidin		FC, ICFC
	HRP Streptavidin		ELISA, ELISPOT, IHC, WB
	PE Streptavidin		FC, ICFC
	PE/Cy5 Streptavidin		FC, ICFC
	PE/Cy7 Streptavidin		FC, ICFC
	Cell Staining Buffer		FC, ICC, ICFC
	Biotin Rat IgG2b, κ Isotype Ctrl	RTK4530	FC, ICFC
	TruStain fcX™ (anti-mouse CD16/32)	93	FC



For research use only. Not for diagnostic use. Not for resale. BioLegend will not be held responsible for patent infringement or other violations that may occur with the use of our products.



*These products may be covered by one or more Limited Use Label Licenses (see the BioLegend Catalog or our website, www.biolegend.com/ordering#license). BioLegend products may not be transferred to third parties, resold, modified for resale, or used to manufacture commercial products, reverse engineer functionally similar materials, or to provide a service to third parties without written approval of BioLegend. By use of these products you accept the terms and conditions of all applicable Limited Use Label Licenses. Unless otherwise indicated, these products are for research use only and are not intended for human or animal diagnostic, therapeutic or commercial use.