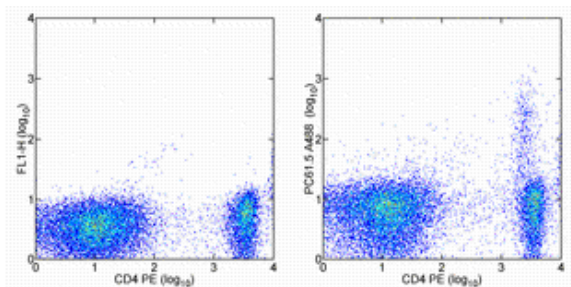


Anti-Mouse CD25 Alexa Fluor[®] 488

Catalog Number: 53-0251

Also Known As: Interleukin-2 Receptor alpha

RUO: For Research Use Only. Not for use in diagnostic procedures.



Staining of BALB/c splenocytes with Anti-Mouse CD4 PE (cat. 12-0042) and 0.06 µg of Rat IgG1 k Isotype Control Alexa Fluor[®] 488 (cat. 53-4301) (left) or Anti-Mouse CD25 Alexa Fluor[®] 488 (right). Cells in the lymphocyte gate were used for analysis.

Product Information

Contents: Anti-Mouse CD25 Alexa Fluor[®] 488


REF Catalog Number: 53-0251

Clone: PC61.5


Concentration: 0.5 mg/mL

Host/Isotype: Rat IgG1, lambda

Formulation: aqueous buffer, 0.09% sodium azide, may contain carrier protein/stabilizer

 Temperature Limitation: Store at 2-8°C. Do not freeze. Light sensitive material.

LOT Batch Code: Refer to Vial

 Use By: Refer to Vial

 Contains sodium azide

Description

The PC61.5 antibody reacts with mouse CD25, the 55 kDa interleukin-2 receptor alpha chain (IL-2R alpha). CD25 is expressed by early progenitors of the T and B lineage as well as by activated mature T and B lymphocytes. By itself, CD25 binds IL-2 only with low affinity. However, CD25 associates with CD122 (IL-2 receptor beta chain) and CD132 (common gamma chain) to form the high affinity IL-2 receptor. Binding of IL-2 to both the high and low affinity classes of IL-2 receptor is inhibited by the PC61.5 antibody. CD25 plays a role in lymphocyte differentiation and activation/proliferation.

Applications Reported

This PC61.5 antibody has been reported for use in flow cytometric analysis.

Applications Tested

This PC61.5 antibody has been tested by flow cytometric analysis of mouse splenocytes. This can be used at less than or equal to 0.06 µg per test. A test is defined as the amount (µg) of antibody that will stain a cell sample in a final volume of 100 µL. Cell number should be determined empirically but can range from 10⁵ to 10⁸ cells/test. It is recommended that the antibody be carefully titrated for optimal performance in the assay of interest.

References

Tuve S, Chen BM, Liu Y, Cheng TL, Touré P, Sow PS, Feng Q, Kiviat N, Strauss R, Ni S, Li ZY, Roffler SR, Lieber A. Combination of tumor site-located CTL-associated antigen-4 blockade and systemic regulatory T-cell depletion induces tumor-destructive immune responses. *Cancer Res.* 2007 Jun 15;67(12):5929-39. (PC61.5, in vivo depletion, PubMed)

Huang B, Zhao J, Shen S, Li H, He KL, Shen GX, Mayer L, Unkeless J, Li D, Yuan Y, Zhang GM, Xiong H, Feng ZH. *Listeria monocytogenes* promotes tumor growth via tumor cell toll-like receptor 2 signaling. *Cancer Res.* 2007 May 1;67(9):4346-52. (PC61.5, in vivo depletion, PubMed)

Hayashi T, Hasegawa K, Adachi C. Elimination of CD4+CD25+ T cell accelerates the development of glomerulonephritis during the preactive phase in autoimmune-prone female NZB × NZW F1 mice. *Int J Exp Pathol.* 2005 Oct;86(5):289-96. (PC61.5, in vivo depletion, PubMed)

Lowenthal JW, Corthésy P, Tougne C, Lees R, MacDonald HR, Nabholz M. High and low affinity IL 2 receptors: analysis by IL 2 dissociation rate and reactivity with monoclonal anti-receptor antibody PC61. *J Immunol.* 1985 Dec;135(6):3988-94.

Lowenthal JW, Zubler RH, Nabholz M, MacDonald HR. Similarities between interleukin-2 receptor number and affinity on activated B and T lymphocytes. *Nature.* 1985 Jun 20-26;315(6021):669-72.

Lowenthal JW, Tougne C, MacDonald HR, Smith KA, Nabholz M. Antigenic stimulation regulates the expression of IL 2 receptors in a cytolytic T lymphocyte clone. J Immunol. 1985 Feb;134(2):931-9.

Related Products

12-0042 Anti-Mouse CD4 PE (RM4-5)

53-0252 Anti-Mouse CD25 Alexa Fluor® 488 (eBio7D4 (7D4))

53-0253 Anti-Mouse CD25 Alexa Fluor® 488 (eBio3C7 (3C7))

53-0259 Anti-Human CD25 Alexa Fluor® 488 (BC96)

53-4301 Rat IgG1 K Isotype Control Alexa Fluor® 488

Legal

Alexa Fluor® and Pacific Blue® are registered trademarks of and licensed under patents assigned to Molecular Probes, Inc. for research use only. This product is subject to an agreement between Molecular Probes, Inc. and eBioscience, and the manufacture, use, sale or import of this product may be subject to one or more U.S. patents, pending applications and corresponding foreign equivalents, owned by Molecular Probes, Inc. (a wholly owned subsidiary of Invitrogen Corp). The purchase of this product conveys to the buyer the non-transferable right to use the purchased amount of the product for life science research or as an ASR. The buyer cannot use this product for manufacturing or for any other screening (specifically including use in combination with microarrays or High Content Screening) or testing purpose, other than as an ASR. For information on purchasing a license to this product for purposes other than life science research or use as an ASR, contact Molecular Probes, Inc.

Not for further distribution without written consent.

Copyright © 2000-2010 eBioscience, Inc.

Tel: 888.999.1371 or 858.642.2058 • Fax: 858.642.2046 • www.eBioscience.com • info@eBioscience.com