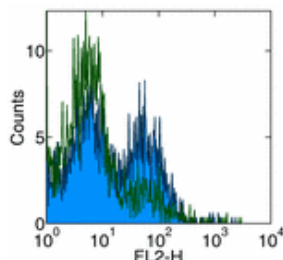


Anti-Human CD197 (CCR7) Purified

Catalog Number: 14-9977

Also Known As: EBI-1

RUO: For Research Use Only



Staining of prelysed normal human peripheral blood cells with Anti-Human CD197 (CCR7) Purified followed by Anti-Mouse IgG Biotin and Streptavidin PE (cat. 12-4317). Appropriate isotype controls were used (open histogram). Cells in the lymphocyte population were used for analysis.

Product Information

Contents: Anti-Human CD197 (CCR7) Purified

REF Catalog Number: 14-9977

Clone: CCR7.6B3

Concentration: 0.5 mg/ml

Host/Isotype: Mouse IgG1, κ

Formulation: aqueous buffer, 0.09% sodium azide, may contain carrier protein/stabilizer



Temperature Limitation: Store at 2-8°C.



Batch Code: Refer to Vial



Use By: Refer to Vial



Caution, contains Azide

Description

The CCR7.6B3 monoclonal antibody reacts with human CCR7, also known as EBI-1 and CD197. CCR7 is a member of the G-protein-coupled chemokine receptor family with seven membrane-spanning domains and functions as a receptor for 6CKine/SLC (secondary lymphoid-tissue chemokine) and MIP-3 β /ELC (EBI1-ligand chemokine). CCR7 is expressed predominantly on naive T cells characterized as CD45RA⁺CCR7⁺ in both CD4 and CD8 populations in peripheral blood as well as on dendritic cells.

Applications Reported

CCR7.6B3 has been reported for use in flow cytometric analysis. It is recommended that a 3-step staining with anti-mouse IgG-Biotin and SAV-PE be used for detection. As the presence of anti-coagulant (EDTA, Heparin, Na-citrate) may adversely affect the binding of this antibody to the CCR7 antigen, it is recommended to use PBMC or pre-washed blood when staining with this mAb.

Applications Tested

The CCR7.6B3 antibody has been tested by flow cytometric analysis of human peripheral blood leukocytes. This can be used at less than or equal to 1 μ g per test. A test is defined as the amount (μ g) of antibody that will stain a cell sample in a final volume of 100 μ L. Cell number should be determined empirically but can range from 10⁵ to 10⁸ cells/test. It is recommended that the antibody be carefully titrated for optimal performance in the assay of interest.

References

Hasegawa, H., T. Nomura, et al. 2000. Increased chemokine receptor CCR7/EBI1 expression enhances the infiltration of lymphoid organs by adult T-cell leukemia cells. *Blood* 95(1): 30-8.

Hirose J, Kawashima H, et al. 2002. Chondroitin sulfate B exerts its inhibitory effect on secondary lymphoid tissue chemokine (SLC) by binding to the C-terminus of SLC. *Biochim Biophys Acta*. 1571(3):219-24. (FC, PubMed)

Hasegawa H, Nomura T, et al. 2000. Increased chemokine receptor CCR7/EBI1 expression enhances the infiltration of lymphoid organs by adult T-cell leukemia cells. *Blood* 95(1):30-8. (FC, PubMed)

Related Products

11-4011 Anti-Mouse IgG FITC

11-4317 Streptavidin FITC

12-4317 Streptavidin PE

13-4013 Anti-Mouse IgG Biotin (Polyclonal)

14-4714 Mouse IgG1 K Isotype Control Purified

Not for further distribution without written consent.

Copyright © 2000-2010 eBioscience, Inc.

Tel: 888.999.1371 or 858.642.2058 • Fax: 858.642.2046 • www.eBioscience.com • info@eBioscience.com