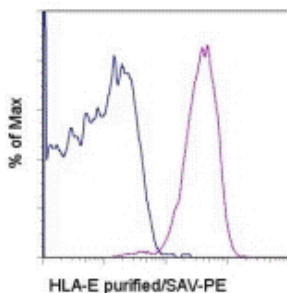


## Anti-Human HLA-E Purified

**Catalog Number:** 14-9953

**Also Known As:**

**RUO: For Research Use Only. Not for use in diagnostic procedures.**



Staining of normal human peripheral blood cells with 0.5 ug of Mouse IgG1 K Isotype Control Purified (cat. 14-4714) (open histogram) or 0.5 ug of Anti-Human HLA-E Purified (filled histogram) followed by Anti-Mouse IgG Biotin (cat. 13-4013) and Streptavidin PE (cat. 12-4317). Cells in the lymphocyte gate were used for analysis.

### Product Information

**Contents:** Anti-Human HLA-E Purified

**REF** **Catalog Number:** 14-9953

**Clone:** 3D12HLA-E

**Concentration:** 0.5 mg/mL

**Host/Isotype:** Mouse IgG1, kappa

**Formulation:** aqueous buffer, 0.09% sodium azide, may contain carrier protein/stabilizer



**Temperature Limitation:** Store at 2-8°C.



**Batch Code:** Refer to Vial



**Use By:** Refer to Vial



**Caution, contains Azide**

### Description

The monoclonal antibody 3D12 (HLA-E) recognizes human HLA-E, a member of the Human Leukocyte Antigen family. HLA-E is a MHC Class IB member, which has a specialized role in NK cell recognition. Binding of a restricted set of peptides derived from other Class I leader sequences to the HLA-E and B2M (beta2 microglobulin) complex leads to interaction with NKG2A on NK cells. This binding protects the HLA-G-expressing cell from NK cell killing. HLA-E expression is ubiquitous.

### Applications Tested

This 3D12 (HLA-E) antibody has been tested by flow cytometric analysis of normal human peripheral blood cells. This can be used at less than or equal to 1 µg per test. A test is defined as the amount (µg) of antibody that will stain a cell sample in a final volume of 100 µL. Cell number should be determined empirically but can range from 10<sup>5</sup> to 10<sup>8</sup> cells/test. It is recommended that the antibody be carefully titrated for optimal performance in the assay of interest.

### References

Wooden SL, Kalb SR, Cotter RJ, Soloski MJ. Cutting edge: HLA-E binds a peptide derived from the ATP-binding cassette transporter multidrug resistance-associated protein 7 and inhibits NK cell-mediated lysis. J Immunol. 2005 Aug 1;175(3):1383-7. (3D12 HLA-E, FC, PubMed)

Strong RK, Holmes MA, Li P, Braun L, Lee N, Geraghty DE. HLA-E allelic variants. Correlating differential expression, peptide affinities, crystal structures, and thermal stabilities. J Biol Chem. 2003 Feb 14;278(7):5082-90. Epub 2002 Oct 30. (3D12 HLA-E, FC, ELISA, PubMed)

Lee N, Llano M, Carretero M, Ishitani A, Navarro F, López-Botet M, Geraghty DE. HLA-E is a major ligand for the natural killer inhibitory receptor CD94/NKG2A. Proc Natl Acad Sci U S A. 1998 Apr 28;95(9):5199-204. (3D12 HLA-E, FC, FA, PubMed)

### Related Products

12-4317 Streptavidin PE

13-4013 Anti-Mouse IgG Biotin (Polyclonal)

14-4714 Mouse IgG1 K Isotype Control Purified (P3.6.2.8.1)

Not for further distribution without written consent.

Copyright © 2000-2012 eBioscience, Inc.

Tel: 888.999.1371 or 858.642.2058 • Fax: 858.642.2046 • [www.eBioscience.com](http://www.eBioscience.com) • [info@eBioscience.com](mailto:info@eBioscience.com)