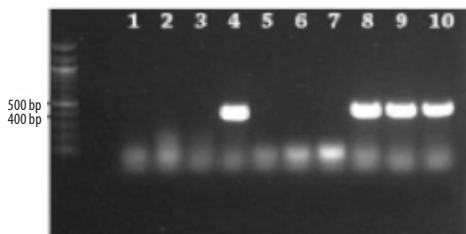


## PCR Master Mixes from AMRESCO

*Ready to use solutions ideal  
for Colony Screening*



Colonies were screened directly using Ready PCR Mix, 2X. 10 distinct colonies were suspended into Ready PCR Mix, 2X in separate PCR tubes. 5 µl of the PCR reaction mix was plated on gridded LB plates with Kanamycin for 37°C overnight growth. After 30 PCR cycles products were screened on a 1% agarose gel. Colonies 4, 8, 9 and 10 contained the desired sequences. *Courtesy of Dr. Irene Lee, Case Western Reserve University, Cleveland, OH*

## Ready PCR Mix, 2X

The **only** complete PCR master mix that takes you from Gel-to-Visualization in one easy step.

### Direct to Gel Loading

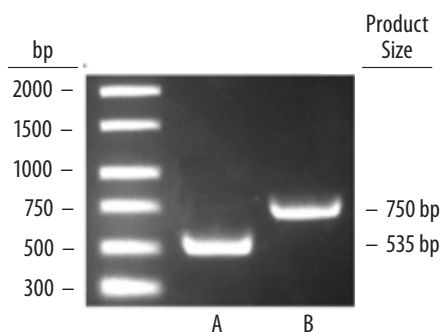
Complete, ready-to-use solution reduces sample handling and allows you to quickly perform multiple reactions in one easy step.

### Immediate Visualization

Both a fast migrating tracking dye and a fluorescent DNA dye is included which allows immediate band visualization of the amplified product.

### Safe to Use

Non-toxic, non-mutagenic formula eliminates the need to use ethidium bromide.



**Ready PCR Mix, 2X efficiently amplifies plasmid and genomic DNA.** Single copy targets were amplified from 50 ng of pUC19 plasmid (A) or *S. aureus* genomic DNA (B) for 35 cycles. 10 µl of each PCR reaction was directly loaded onto a 1% agarose gel and visualized with a Syngene HR gel doc system.

ALSO AVAILABLE

## Extender™ PCR-to-Gel Master Mix, 2X

Same great formulation as Ready PCR Mix, 2X without the fluorescent DNA dye.

Description	Product Code	Pack Size
<b>Ready PCR Mix, 2X</b> Mix includes: Extender™ Taq DNA Polymerase, Reaction Buffer with 1.75mM MgCl <sub>2</sub> , dNTPs, Density Reagent, Tracking Dye, and Fluorescent DNA Dye	N806-2X1.25ML	2 x 1.25 ml
<b>Extender™ PCR-to-Gel Master Mix, 2X</b> Mix includes: Extender™ Taq DNA Polymerase, Reaction Buffer with 1.75mM MgCl <sub>2</sub> , dNTPs, Density Reagent and Tracking Dye	N867-2X1.25ML	2 x 1.25 ml

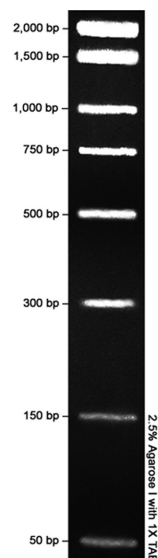
\*Each mix is sufficient for 100 reactions.

*"Being able to quickly screen multiple colonies at once through PCR while having separate colonies prepared for further isolation of positive screen tests substantially reduces the in-lab time . . . [Ready PCR Mix, 2X] . . . would certainly become another valuable and powerful research tool utilized in our experiments."*

**Dr. Irene Lee,**  
Case Western Reserve University  
Cleveland, OH

## EZ-Vision® PCR DNA Ladder

*Instant ladder visualization with  
non-toxic, non-mutagenic formula*

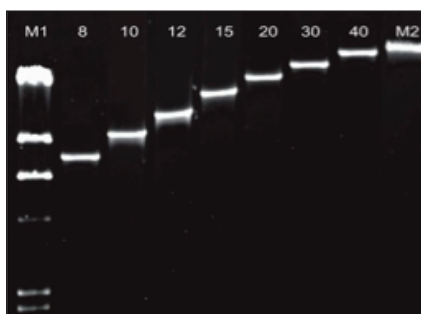


**EZ-Vision® PCR DNA Ladder.** 8 fragments ranging from 50 - 2,000 bp.

## Extender™ DNA

### Polymerase Blend, 500U

*Amplifies long and difficult templates*



**Long PCR with Extender™ DNA Polymerase Blend, 500U.** Amplicons ranging in size from 8 kb to > 40 kb are shown.

## Essential PCR Products from AMRESCO

Description	Product Code	Pack Size
<b>GEL ELECTROPHORESIS</b>		
<b>EZ-Vision® PCR DNA Ladder</b> DNA MW marker with fluorescent EZ-Vision® dye in loading buffer, 8 fragments from 50 to 2,000 bp.	N854-300UL	300 µl
<b>Agarose I™</b> All purpose agarose suitable for analytical and preparative applications; nuclease & protease free.	0710-25G	25 g
	0710-100G	100 g
<b>Agarose SFR™</b> Super fine resolution agarose, low melting temperature for analytical and preparative electrophoresis.	J234-25G	25 g
	J234-100G	100 g
<b>TAE, 25X Liquid Concentrate</b> DNA electrophoresis buffer best for DNA recovery and resolution of large fragments.	0796-1.6L	1.6 L
	0796-4L	4 L
<b>TAE, 50X Liquid Concentrate</b> DNA electrophoresis buffer best for DNA recovery and resolution of large fragments.	K915-1.6L	1.6 L
	K915-4L	4 L
<b>TBE, 10X Liquid Concentrate</b> DNA electrophoresis buffer with high buffering capacity best for resolution of small fragments.	0658-500ML	500 ml
	0658-1L	1 L
<b>GEL VISUALIZATION</b>		
<b>EZ-Vision® One DNA Dye as Loading Buffer, 6X</b> Non-mutagenic, non-toxic fluorescent DNA dye as loading buffer. Immediate visualization with no post staining or destaining. Includes one tracking dye.	N472-KIT	5 x 1 ml
<b>EZ-Vision® Two DNA Dye as Loading Buffer, 6X</b> Includes two tracking dyes.	N650-KIT	5 x 1 ml
<b>EZ-Vision® Three DNA Dye as Loading Buffer, 6X</b> Includes three tracking dyes.	N313-KIT	5 x 1 ml
<b>RELATED PRODUCTS FOR PCR AMPLIFICATION</b>		
<b>Extender™ DNA Polymerase Blend, 500U</b> Taq polymerase ideal for long and difficult to copy templates. Wide tolerance for MgCl <sub>2</sub> and salt concentrations. Kit includes 1 tube of Extender™ Taq DNA Polymerase Blend, 500 U, 1 tube of Extender™ Taq DNA Polymerase Buffer A, 10X (without MgCl <sub>2</sub> ), 1 tube of Extender™ Taq DNA Polymerase Buffer S, 10X (with MgCl <sub>2</sub> ), and 1 tube of Extender™ Polymerase MgCl <sub>2</sub> , 50 mM.	N224-KIT	1 kit
<b>LB Broth</b> Pre-mixed homogeneous powder media for preparation of plasmid DNA and recombinant proteins.	J106-500G	500 g
	J106-1KG	1 KG
<b>dNTP Mix, 25mM</b> dNTP mixture for PCR with 25mM each of dATP, dCTP, dGTP, dTTP.	E636-40UMOLE	40 umoles