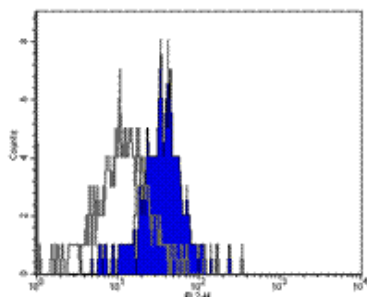


Anti-Human CD281 (TLR1) Purified

Catalog Number: 14-9911

Also Known As: TLR-1, toll-like receptor 1

RUO: For Research Use Only



Staining of normal human peripheral blood cells with Anti-Human CD281 (TLR1) Purified vs. Purified Mouse IgG1 Isotype Control (cat. 14-4714). Cell in the monocyte gate were used for analysis.

Product Information

Contents: Anti-Human CD281 (TLR1) Purified


REF Catalog Number: 14-9911

Clone: GD2.F4

Concentration: 0.5 mg/ml


Host/Isotype: Mouse IgG1, κ

Formulation: aqueous buffer, 0.09% sodium azide, may contain carrier protein/stabilizer

 Temperature Limitation: Store at 2-8°C.

LOT Batch Code: Refer to Vial

 Use By: Refer to Vial

 Caution, contains Azide

Description

The GD2.F4 antibody reacts with human Toll-like receptor 1 (TLR1). TLR1 is expressed in low numbers on the surface of peripheral blood monocytes and even lower numbers on dendritic cells. A very high degree of donor variability has been reported for TLR1 expression. eBioscience manufactured GD2.F4 mAb has been tested by flow cytometry, in parallel with a sample from the developer using cells from healthy donors. eBioscience and the reference antibody gave similar results: donors tested confirmed low levels expression of TLR1 on PBMC (less than 1/4 log shift). While the ligand and exact function of TLR1 are not defined yet, it has been suggested that TLR1 may cooperate with TLR2 in response to certain antagonists. Despite low levels of surface expression as detected by flow cytometric analysis, TLRs are efficient signal transducing molecules in monocytes and dendritic cells. To date, at least ten members of the Toll family have been identified in human. This family of type I transmembrane proteins is characterized by an extracellular domain with leucine-rich repeats and a cytoplasmic domain with homology to the type I IL-1 receptor. Two of these receptors, TLR2 and TLR4, are pattern recognition receptors and signaling molecules in response to bacterial lipoproteins and have been implicated in innate immunity and inflammation.

Applications Reported

The GD2.F4 antibody has been reported for use in flow cytometric analysis, and immunohistochemical staining. To date, applicability of this mAb for IP, WB, or inhibition of function has not been reported.

Applications Tested

The GD2.F4 antibody has been tested by flow cytometric analysis of human peripheral blood leukocytes. This can be used at less than or equal to 1 μ g per test. A test is defined as the amount (μ g) of antibody that will stain a cell sample in a final volume of 100 μ L. Cell number should be determined empirically but can range from 10^5 to 10^8 cells/test. It is recommended that the antibody be carefully titrated for optimal performance in the assay of interest.

References

- A. Visintin, et al. "Regulation of toll-like receptors in human monocytes and dendritic cells." *J. Immunol.* 166: 249 (2001).
 D.H. Wyllie, et al. "Evidence for an accessory protein function for toll-like receptor 1 in anti-bacterial responses." *J. Immunol.* 165: 7125 (2000).
 Krutzik SR, Ochoa MT, Sieling PA, et al. Activation and regulation of Toll-like receptors 2 and 1 in human leprosy. *Nat Med.* 2003 May;9(5):525-532.

Related Products

11-4011 Anti-Mouse IgG FITC

11-4317 Streptavidin FITC

12-4317 Streptavidin PE
13-4013 Anti-Mouse IgG Biotin (Polyclonal)
14-4714 Mouse IgG1 K Isotype Control Purified
14-8185 B18R Recombinant Protein
17-4317 Streptavidin APC
34-8185 B18R Recombinant Protein Carrier-Free

Not for further distribution without written consent.

Copyright © 2000-2010 eBioscience, Inc.

Tel: 888.999.1371 or 858.642.2058 • Fax: 858.642.2046 • www.eBioscience.com • info@eBioscience.com