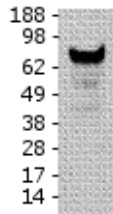


Anti-Human/Mouse Bcl-6 Purified

Catalog Number: 14-9887

Also known as: B-cell lymphoma 6, Bcl6

RUO: For Research Use Only. Not for use in diagnostic procedures.



Immunoblotting of reduced A20 cell lysate with 5 µg/ml of Anti-Mouse Bcl-6 Purified antibody. Bands were visualized using Anti-Mouse IgG HRP.

Product Information

Contents: Anti-Human/Mouse Bcl-6 Purified
Catalog Number: 14-9887
Clone: GI191E
Concentration: 0.5 mg/mL
Host/Isotype: Mouse IgG1, kappa

REF



Formulation: aqueous buffer, 0.09% sodium azide, may contain carrier protein/stabilizer
Temperature Limitation: Store at 2-8°C.

Batch Code: Refer to vial

Use By: Refer to vial

Description

This GI191E monoclonal antibody reacts with mouse and human Bcl-6, which is also known as B-cell lymphoma 6. A member of the POZ family of transcriptional repressors, Bcl-6 is expressed most abundantly in germinal center B cells, as well as in differentiating and activated B cells. This 79-kDa protein is essential for germinal center B cell proliferation and survival. Moreover, during B cell development, Bcl-6 plays an important role in promoting pre-B cell survival to enable the generation of a diverse B cell repertoire. Moreover, Bcl-6 is expressed constitutively in diffuse large B cell lymphomas (DLBCLs), Burkitt's lymphoma, and non-Hodgkin's lymphoma. Reports also suggest expression of Bcl-6 in CD4+ T follicular helper cells and memory T cells. Bcl-6 has been reported to be antagonized by Blimp-1.

Applications Reported

This GI191E antibody has been reported for use in immunoblotting (WB) and immunohistochemistry (FFPE).

Applications Tested

This GI191E antibody has been tested by immunoblotting of reduced cell lysate prepared from A20 cells. This can be used at less than or equal to 5 µg/ml. It is recommended that the antibody be carefully titrated for optimal performance in the assay of interest.

References

Duy C, Yu JJ, Nahar R, Swaminathan S, Kweon SM, Polo JM, Valls E, Klemm L, Shojaee S, Cerchietti L, Schuh W, Jäck HM, Hurtz C, Ramezani-Rad P, Herzog S, Jumaa H, Koeffler HP, de Alborán IM, Melnick AM, Ye BH, Müschen M. BCL6 is critical for the development of a diverse primary B cell repertoire. *J Exp Med.* 2010 Jun 7;207(6):1209-21.

Johnston RJ, Poholek AC, DiToro D, Yusuf I, Eto D, Barnett B, Dent AL, Craft J, Crotty S. Bcl6 and Blimp-1 are reciprocal and antagonistic regulators of T follicular helper cell differentiation. *Science.* 2009 Aug 21;325(5943):1006-10.

García JF, García JF, Maestre L, Lucas E, Sánchez-Verde L, Romero-Chala S, Piris MA, Roncador G. Genetic immunization: a new monoclonal antibody for the detection of BCL-6 protein in paraffin sections. *J Histochem Cytochem.* 2006 Jan;54(1):31-8.

Not for further distribution without written consent.

Copyright © 2000-2012 eBioscience, Inc.

Tel: 888.999.1371 or 858.642.2058 • Fax: 858.642.2046 • www.ebioscience.com •
info@ebioscience.com

Anti-Human/Mouse Bcl-6 Purified

Catalog Number: 14-9887

Also known as: B-cell lymphoma 6, Bcl6

RUO: For Research Use Only. Not for use in diagnostic procedures.

Related Products

14-4714 Mouse IgG1 K Isotype Control Purified (P3.6.2.8.1)

Not for further distribution without written consent.

Copyright © 2000-2012 eBioscience, Inc.

Tel: 888.999.1371 or 858.642.2058 • Fax: 858.642.2046 • www.ebioscience.com •
info@ebioscience.com