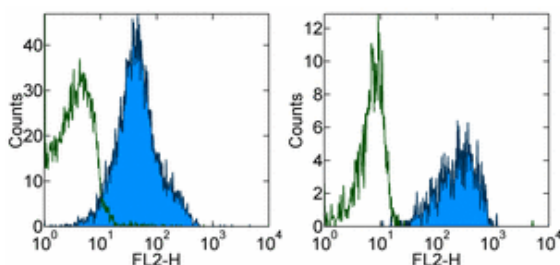


Anti-Human CD321 (F11R) Purified

Catalog Number: 14-9321

Also Known As: F11 R, JAM-1, JAM-A

RUO: For Research Use Only



Staining of normal human peripheral blood cells with 0.125 µg of Purified Mouse IgG1 κ Isotype Control (cat. 14-4714) (open histogram) or 0.125 µg of Anti-Human CD321 (F11R) Purified (filled histogram) followed by F(ab')₂ Anti-Mouse IgG PE (cat. 12-4012). Cells in the lymphocyte (left) and monocyte (right) gates were used for analysis.

Product Information

Contents: Anti-Human CD321 (F11R) Purified


REF Catalog Number: 14-9321

Clone: WK9

Concentration: 0.5 mg/ml


Host/Isotype: Mouse IgG1

Formulation: aqueous buffer, 0.09% sodium azide, may contain carrier protein/stabilizer

 Temperature Limitation: Store at 2-8°C.

LOT Batch Code: Refer to Vial

 Use By: Refer to Vial

 Caution, contains Azide

Description

CD321 (F11R, JAM-1, JAM-A) is a cell-surface adhesion molecule belonging to the Ig superfamily of receptors. CD321 is a 32-41 kD glycoprotein, possessing two extracellular Ig-like domains, a transmembrane region, and a short cytosolic tail. The protein assembles at the membrane as a homodimer, and can associate laterally with other membrane proteins including integrins. CD321 is expressed on a variety of cell types, including leukocytes, platelets, erythrocytes, epithelial and endothelial cells, and plays a role in mediating cell-cell contact. CD321 can be found in close proximity to several components of epithelial tight junctions, including ZO-1 and occludin. CD321 is also involved in reovirus entry into cells.

Applications Reported

This WK9 antibody has been reported for use in flow cytometric analysis and immunoprecipitation. The WK9 antibody has also been found useful for immunoblotting, recognizing a protein of approximately 38 kD under reducing and non-reducing conditions.

Applications Tested

This WK9 antibody has been tested by flow cytometric analysis of human peripheral blood leukocytes. This can be used at less than or equal to 0.25 µg per test. A test is defined as the amount (µg) of antibody that will stain a cell sample in a final volume of 100 µL. Cell number should be determined empirically but can range from 10⁵ to 10⁸ cells/test. It is recommended that the antibody be carefully titrated for optimal performance in the assay of interest.

References

Sobocka MB, Sobocki T, Banerjee P, Weiss C, Rushbrook JI, Norin AJ, Hartwig J, Salifu MO, Markell MS, Babinska A, Ehrlich YH, Kornecki E. Cloning of the human platelet F11 receptor: a cell adhesion molecule member of the immunoglobulin superfamily involved in platelet aggregation. *Blood*. 2000 Apr 15;95(8):2600-9.(PubMed)

Ostermann G, Weber KS, Zerneck A, Schroder A, Weber C. JAM-1 is a ligand of the beta(2) integrin LFA-1 involved in transendothelial migration of leukocytes. *Nat Immunol*. 2002 Feb;3(2):151-8.(PubMed)

Naik MU, Mousa SA, Parkos CA, Naik UP. Signaling through JAM-1 and alphavbeta3 is required for the angiogenic action of bFGF: dissociation of the JAM-1 and alphavbeta3 complex. *Blood*. 2003 Sep 15;102(6):2108-14. (PubMed)

Related Products

11-4011 Anti-Mouse IgG FITC

11-4317 Streptavidin FITC

12-4317 Streptavidin PE

13-4013 Anti-Mouse IgG Biotin (Polyclonal)

14-4714 Mouse IgG1 K Isotype Control Purified
17-4317 Streptavidin APC

Not for further distribution without written consent.

Copyright © 2000-2010 eBioscience, Inc.

Tel: 888.999.1371 or 858.642.2058 • Fax: 858.642.2046 • www.eBioscience.com • info@eBioscience.com