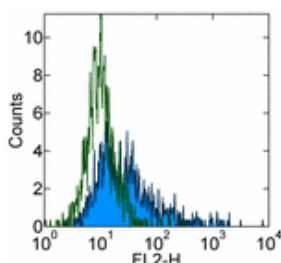


Anti-Human CD286 (TLR6) Purified

Catalog Number: 14-9069

Also Known As: TLR-6, toll-like receptor 6

RUO: For Research Use Only



Staining of MEG-01 cell line with 0.25 µg of Rat IgG2a κ Isotype Control Purified (cat. 14-4321) (open histogram) or 0.25 µg of Anti-Human CD286 (TLR6) Purified (filled histogram) followed by Anti-Rat IgG Biotin (cat. 13-4813) and Streptavidin PE (cat. 12-4317). Total viable cells were used for analysis.

Product Information

Contents: Anti-Human CD286 (TLR6) Purified

REF Catalog Number: 14-9069

Clone: hPer6

Concentration: 0.5 mg/ml

Host/Isotype: Rat IgG2a, κ

Formulation: aqueous buffer, 0.09% sodium azide, may contain carrier protein/stabilizer



Temperature Limitation: Store at 2-8°C.



Batch Code: Refer to Vial



Use By: Refer to Vial



Caution, contains Azide

Description

The hPer6 antibody was generated against a recombinant protein fragment of human TLR6. To date, at least twelve members of the Toll Like Receptor family have been identified in human. This family of type I transmembrane proteins is characterized by an extracellular domain with leucine-rich repeats and a cytoplasmic domain with homology to the type I IL-1 receptor. TLR6 is reported to be expressed in spleen, thymus, ovary and lung and to associate with TLR2.

Applications Reported

This hPer6 antibody has been reported for use in flow cytometric analysis, and immunoblotting (WB).

Applications Tested

This hPer6 antibody has been tested by flow cytometric analysis of human MEG-01 cells. This can be used at less than or equal to 0.25 µg per test. A test is defined as the amount (µg) of antibody that will stain a cell sample in a final volume of 100 µL. Cell number should be determined empirically but can range from 10⁵ to 10⁸ cells/test. It is recommended that the antibody be carefully titrated for optimal performance in the assay of interest.

References

- Bulut Y, Faure E, Thomas L, Equils O, Arditi M. 2001. Cooperation of Toll-like receptor 2 and 6 for cellular activation by soluble tuberculosis factor and *Borrelia burgdorferi* outer surface protein A lipoprotein: role of Toll-interacting protein and IL-1 receptor signaling molecules in Toll-like receptor 2 signaling. *J Immunol.* 167(2): 987-94.
- Takeuchi O, Kawai T, Sanjo H, Copeland NG, Gilbert DJ, Jenkins NA, Takeda K, Akira S. 1999. TLR6: A novel member of an expanding toll-like receptor family. *Gene.* 231(1-2): 59-65.

Related Products

- 11-4317 Streptavidin FITC
- 11-4811 Anti-Rat IgG FITC
- 12-4317 Streptavidin PE
- 13-4813 Anti-Rat IgG Biotin (Polyclonal)
- 14-4321 Rat IgG2a K Isotype Control Purified
- 14-8185 B18R Recombinant Protein
- 17-4317 Streptavidin APC
- 34-8185 B18R Recombinant Protein Carrier-Free

Not for further distribution without written consent.

Copyright © 2000-2010 eBioscience, Inc.

Tel: 888.999.1371 or 858.642.2058 • Fax: 858.642.2046 • www.eBioscience.com • info@eBioscience.com