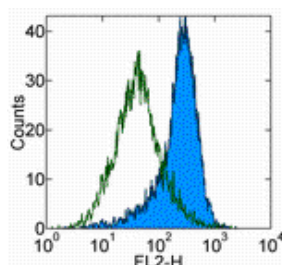


## Anti-Mouse CD282 (TLR2) Purified

**Catalog Number:** 14-9022

**Also Known As:** toll-like receptor 2

**RUO: For Research Use Only**



Staining of Raw246.7 cells with 0.25 ug of Mouse IgG2a K Isotype Control Purified (cat. 14-4724) (open histogram) or 0.25 ug of Anti-Mouse CD282 (TLR2) Purified (filled histogram) followed by Anti-Mouse IgG Biotin (cat. 13-4013) and Streptavidin PE (cat. 12-4317). Total viable cells were used for analysis.

### Product Information

**Contents:** Anti-Mouse CD282 (TLR2) Purified

**REF** **Catalog Number:** 14-9022

**Clone:** mT2.7

**Concentration:** 0.5 mg/mL

**Host/Isotype:** Mouse IgG2a, kappa

**Formulation:** aqueous buffer, 0.09% sodium azide, may contain carrier protein/stabilizer



**Temperature Limitation:** Store at 2-8°C.



**Batch Code:** Refer to Vial



**Use By:** Refer to Vial



**Caution, contains Azide**

### Description

The mT2.7 monoclonal antibody reacts with mouse Toll-like receptor 2 (TLR2). Mouse TLR2 is expressed by the myeloid lineage, including macrophage and dendritic cells in splenocytes and the RAW264.7 cell line. To date, at least twelve members of the Toll family have been identified in human and mouse. This family of type I transmembrane protein is characterized by an extracellular domain with leucine-rich repeats and a cytoplasmic domain with homology to the type I IL-1 receptor. Two of these receptors, TLR2 and TLR4, are pattern recognition receptors and signaling molecules in response to bacterial lipoproteins and have been implicated in innate immunity and inflammation. TLR2 is expressed on the surface of cells and is responsible for distinguishing different pathogens.

### Applications Reported

This mT2.7 antibody has been reported for use in flow cytometric analysis, immunoprecipitation, and immunohistochemical staining of frozen tissue sections.

### Applications Tested

The mT2.7 antibody has been tested by flow cytometric analysis of Raw246.7 cells. This can be used at less than or equal to 0.5 µg per test. A test is defined as the amount (µg) of antibody that will stain a cell sample in a final volume of 100 µL. Cell number should be determined empirically but can range from 10<sup>5</sup> to 10<sup>8</sup> cells/test. It is recommended that the antibody be carefully titrated for optimal performance in the assay of interest.

### References

Meng G, Rutz M, Schiemann M, Metzger J, Grabiec A, Schwandner R, Lippa PB, Ebel F, Busch DH, Bauer S, Wagner H, Kirschning CJ. 2004. Antagonistic antibody prevents toll-like receptor 2-driven lethal shock-like syndromes. *J Clin Invest.* 2004. 113:1473-81.

### Related Products

13-4013 Anti-Mouse IgG Biotin (Polyclonal)

13-9024 Anti-Human/Mouse CD282 (TLR2) Biotin (T2.5)

14-4724 Mouse IgG2a K Isotype Control Purified

14-8185 B18R Recombinant Protein