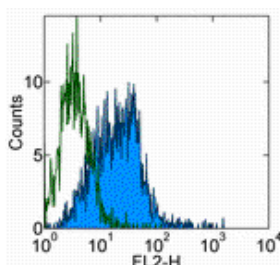


Anti-Human/Mouse SSEA-3 Purified

Catalog Number: 14-8833

Also Known As: stage-specific embryonic antigen-3

RUO: For Research Use Only. Not for use in diagnostic procedures.



Staining of the 2102Ep cell line with 0.5 ug of Rat IgM, K Isotype Control Purified (cat. 14-4341) (open histogram) or 0.5 ug of Anti-Human/Mouse SSEA-3 Purified (filled histogram) followed by Anti-Rat IgM PE (cat. 12-0990). Total viable cells were used for analysis.

Product Information

Contents: Anti-Human/Mouse SSEA-3 Purified

REF **Catalog Number:** 14-8833

Clone: eBioMC-631 (MC-631)

Concentration: 0.5 mg/ml

Host/Isotype: Rat IgM

Formulation: aqueous buffer, 0.09% sodium azide, contains carrier protein/stabilizer if necessary



Temperature Limitation: Store at 2-8°C.



Batch Code: Refer to Vial



Use By: Refer to Vial



Caution, contains Azide

Description

The eBioMC-631 (MC-631) monoclonal antibody reacts with the carbohydrate moiety galactosylgloboside on Stage-specific embryonic antigen-3 (SSEA-3). Expression is restricted to the surface of human teratocarcinoma stem cells (EC), human embryonic germ cells (EG) and human embryonic stem cells (ES) and down regulated following differentiation.

Applications Reported

This eBioMC-631 (MC-631) antibody has been reported for use in flow cytometric analysis, and immunohistochemical staining.

Applications Tested

This eBioMC-631 (MC-631) antibody has been tested by flow cytometric analysis of the 2102Ep cell line. This can be used at less than or equal to 0.5 µg per test. A test is defined as the amount (µg) of antibody that will stain a cell sample in a final volume of 100 µL. Cell number should be determined empirically but can range from 10⁵ to 10⁸ cells/test. It is recommended that the antibody be carefully titrated for optimal performance in the assay of interest.

References

Andrews PW, Goodfellow PN, Shevinsky LH, Bronson DL, Knowles BB. Cell-surface antigens of a clonal human embryonal carcinoma cell line: morphological and antigenic differentiation in culture. *Int J Cancer*. 1982 May 15;29(5):523-31.

Kannagi R, Cochran NA, Ishigami F, Hakomori S, Andrews PW, Knowles BB, Solter D. Stage-specific embryonic antigens (SSEA-3 and -4) are epitopes of a unique globo-series ganglioside isolated from human teratocarcinoma cells. *EMBO J*. 1983;2(12):2355-61.

Related Products

11-0990 Anti-Rat IgM FITC (HIS40)

11-4317 Streptavidin FITC

12-0990 Anti-Rat IgM PE (HIS40)

12-4317 Streptavidin PE

14-4341 Rat IgM Isotype Control Purified

17-4317 Streptavidin APC

