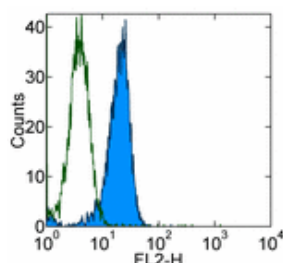


## Anti-Mouse CMKLR1 Purified

Catalog Number: 14-7582

Also Known As: serpentine chemokine-like receptor 1

RUO: For Research Use Only



Staining of resident mouse peritoneal macrophages with 0.25 µg/ml of Rat IgG2a K Isotype Control Purified (cat. 14-4321) (open histogram) or 0.25 µg/ml of Anti-Mouse CMKLR1 Purified (filled histogram) followed by F(ab')<sub>2</sub> Anti-Rat IgG PE (cat. 12-4822). Total viable cells were used for analysis.

### Product Information

Contents: Anti-Mouse CMKLR1 Purified

**REF** Catalog Number: 14-7582

Clone: BZ194 (194)

Concentration: 0.5 mg/ml

Host/Isotype: Rat IgG2a, κ

Formulation: aqueous buffer, 0.09% sodium azide, may contain carrier protein/stabilizer



Temperature Limitation: Store at 2-8°C.



Batch Code: Refer to Vial



Use By: Refer to Vial



Caution, contains Azide

### Description

The 194.7.4 (BZ194) monoclonal antibody reacts to mouse Chemoattractant-like receptor 1 (CMKLR1), also known as ChemR23 and DEZ. CMKLR1 is the receptor for chemerin, a potent chemoattractant. The BZ194 antibody was generated against the amino terminal residues of mouse CMKLR1. In the human CMKLR1 is found on pDC while in the mouse expression is confined to resident peritoneal macrophages with highest expression on Cd11b<sup>lo</sup> macrophages. Expression is absent on *in vitro* cultured bone marrow DCs (except on early DCs as defined by CD11c<sup>+</sup>MHCII<sup>int</sup>), and on freshly isolated CD11c<sup>+</sup> cells from lymph node, spleen and bone marrow. Mouse CMKLR1 is thought to play a role in macrophage function as a result of injury.

### Applications Reported

This BZ194 (194) antibody has been reported for use in flow cytometric analysis.

### Applications Tested

This BZ194 (194) antibody has been tested by flow cytometric analysis on resident mouse peritoneal macrophages. This can be used at less than or equal to 0.5 µg per test. A test is defined as the amount (µg) of antibody that will stain a cell sample in a final volume of 100 µL. Cell number should be determined empirically but can range from 10<sup>5</sup> to 10<sup>8</sup> cells/test. It is recommended that the antibody be carefully titrated for optimal performance in the assay of interest.

### References

Zabel BA, Ohyama T, Zuniga L, Kim JY, Johnston B, Allen SJ, Guido DG, Handel TM, Butcher EC. Chemokine-like receptor 1 expression by macrophages in vivo: regulation by TGF-beta and TLR ligands. *Exp Hematol*. 2006 Aug;34(8):1106-14. (BZ194, FC, PubMed)

### Related Products

11-4317 Streptavidin FITC

11-4811 Anti-Rat IgG FITC

12-4317 Streptavidin PE

13-4813 Anti-Rat IgG Biotin (Polyclonal)

14-4321 Rat IgG2a K Isotype Control Purified

14-7581 Anti-Human CMKLR1 Purified (BZ332)

17-4317 Streptavidin APC

