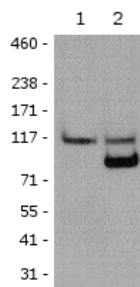


Anti-Human PARP1 Purified

Catalog Number: 14-6667

RUO: For Research Use Only. Not for use in diagnostic procedures.



Cell lysates prepared from Jurkat cells left untreated (lane 1) or treated for 2 hrs with staurosporine (lane 2) were immunoblotted with 0.1 ug/ml of the Anti-Human PARP1 antibody. Bands were visualized using Anti-Mouse IgG HRP.

Product Information



Contents: Anti-Human PARP1 Purified

Catalog Number: 14-6667

Clone: HC2R8

Concentration: 0.5 mg/mL

Host/Isotype: Mouse IgG2b, kappa



Formulation: aqueous buffer, 0.09% sodium azide, may contain carrier protein/stabilizer
Temperature Limitation: Store at 2-8°C.

Batch Code: Refer to vial

Use By: Refer to vial

Description

This HC2R8 monoclonal antibody reacts with human poly (ADP-ribose) polymerase (PARP1). This ubiquitous 116 kDa nuclear enzyme is involved in DNA repair. During apoptosis, active caspases -3, -6 and -7 cleave PARP1 after Asp214, thereby inactivating PARP1 and generating two apoptotic fragments sized 85 kDa and 25 kDa.

The HC2R8 antibody specifically recognizes both the cleaved and non-cleaved forms of PARP.

Applications Reported

This HC2R8 antibody has been reported for use in immunoblotting (WB).

Applications Tested

This HC2R8 antibody has been tested by immunoblotting of staurosporine-treated Jurkat cells. This can be used at less than or equal to 0.1 µg/ml. It is recommended that the antibody be carefully titrated for optimal performance in the assay of interest.

References

Patel T, Gores GJ, Kaufmann SH. The role of proteases during apoptosis. *FASEB J.* 1996. Apr;10(5):587-97. Review.

Tewari M, Quan LT, O'Rourke K, Desnoyers S, Zeng Z, Beidler DR, Poirier GG, Salvesen GS, Dixit VM. Yama/CPP32 beta, a mammalian homolog of CED-3, is a CrmA-inhibitable protease that cleaves the death substrate poly(ADP-ribose) polymerase. *Cell.* 1995. Jun 2;81(5):801-9.

Lamarre D, Talbot B, de Murcia G, Laplante C, Leduc Y, Mazen A, Poirier GG. Structural and functional analysis of poly(ADP ribose) polymerase: an immunological study. *Biochim Biophys Acta.* 1988. Jul 13;950(2):147-60.

Lamarre D, Talbot B, Leduc Y, Muller S, Poirier G. Production and characterization of monoclonal antibodies specific for the functional domains of poly(ADP-ribose) polymerase. *Biochem Cell Biol.* 1986. Apr;64(4):368-76.

Zahradka P., Ebisuzaki K. Poly(ADP-ribose) polymerase is a zinc metalloenzyme. *Eur. J. Biochem.* 1984. 142: 503-

Not for further distribution without written consent.

Copyright © 2000-2012 eBioscience, Inc.

Tel: 888.999.1371 or 858.642.2058 • Fax: 858.642.2046 • www.ebioscience.com • info@ebioscience.com

Anti-Human PARP1 Purified

Catalog Number: 14-6667

RUO: For Research Use Only. Not for use in diagnostic procedures.

509.

Related Products

14-4732 Mouse IgG2b K Isotype Control Purified