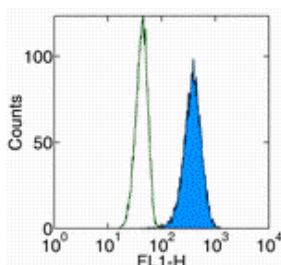


## Anti-Cytochrome C Purified

Catalog Number: 14-6601

Also Known As: cyt c

RUO: For Research Use Only



Intracellular staining of HeLa cells with Anti-Cytochrome C FITC. Appropriate isotype controls were used (open histogram). Total cells were used for analysis.

### Product Information

**Contents:** Anti-Cytochrome C Purified

**REF** **Catalog Number:** 14-6601

**Clone:** 6H2

**Concentration:** 0.5 mg/ml

**Host/Isotype:** Mouse IgG1, kappa

**Formulation:** aqueous buffer, 0.09% sodium azide, may contain carrier protein/stabilizer



**Temperature Limitation:** Store at 2-8°C.



**Batch Code:** Refer to Vial



**Use By:** Refer to Vial



**Caution, contains Azide**

### Description

The 6H2 antibody reacts with the native form of mouse, human, and rat cytochrome c.

### Applications Reported

The 6H2 antibody has been reported for use in intracellular flow cytometric analysis, and immunoprecipitation. (Fluorochrome conjugated 6H2 is recommended for use in intracellular flow cytometry.)

### Applications Tested

The 6H2 antibody has been tested by intracellular flow cytometric analysis. It is recommended that the antibody be carefully titrated for optimal performance in the assay of interest.

### References

Jemmerson et al., Eur J Immunol, 1991 21: 143-151

Goshorn et al, J Biol Chem 1991 266(4) 2134-42.

### Related Products

00-8222 IC Fixation Buffer

00-8333 Permeabilization Buffer (10X)

14-4714 Mouse IgG1 K Isotype Control Purified

14-6602 Anti-Cytochrome C Purified (7H8)

88-8823 Fixation & Permeabilization Buffers

Not for further distribution without written consent.

Copyright © 2000-2010 eBioscience, Inc.

Tel: 888.999.1371 or 858.642.2058 • Fax: 858.642.2046 • [www.eBioscience.com](http://www.eBioscience.com) • [info@eBioscience.com](mailto:info@eBioscience.com)