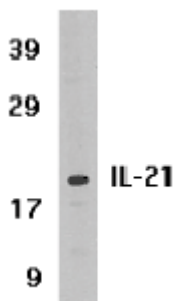


## Anti-Human IL-21 Purified

**Catalog Number:** 14-6465

**Also known as:** Interleukin-21, IL21

**RUO: For Research Use Only. Not for use in diagnostic procedures.**



Immunoblot analysis of reduced HL60 cell lysates using Anti-Human IL-21 Purified (1 µg/ml) and detected using Anti-Rabbit IgG-HRP.

### Product Information



**Contents:** Anti-Human IL-21 Purified

**Catalog Number:** 14-6465

**Clone:** Polyclonal

**Host/Isotype:** Rabbit IgG



**Formulation:** aqueous buffer, 0.09% sodium azide, may contain carrier protein/stabilizer

**Temperature Limitation:** Store at 2-8°C.

**Batch Code:** Refer to vial

**Use By:** Refer to vial

**Caution, contains Azide**

### Description

The rabbit polyclonal antibody reacts with human IL-21; the antibody was raised against a synthetic peptide (tcpscdsyekkppke) corresponding to amino acids 121 to 135 of human IL-21 precursor (1). A novel cytokine was recently identified in human and mouse and designated IL-21 (1), which has significant homology to IL-2, IL-4, and IL-15. The receptor for IL-21 (IL-21R, also termed NLR for novel Interleukin receptor) is a new member of the class I cytokine receptor family (1,2). IL-21R forms a complex with the common cytokine receptor  $\gamma$  chain,  $\gamma c$ , and mediates IL-21 signaling (3,4). IL-21 and its receptor activate JAK-STAT signaling pathway. IL-21 is expressed in activated T cells, and HL-60 and THP-1 cell lines. IL-21 plays a role in the proliferation and maturation of NK, B and T cell populations.

### Applications Reported

This polyclonal antibody has been reported for use in immunoblotting (WB).

### Applications Tested

This antibody can be used for detection of IL-21 by Western blot at 0.5 to 1 µg/ml. Human HL-60 and THP-1 cell lysates can be used as positive control and an approximately 18 kDa band can be detected.

### References

1. Parrish-Novak J, Dillon SR, Nelson A, et al. Interleukin 21 and its receptor are involved in NK cell expansion and regulation of lymphocyte function. *Nature*. 2000;408(6808):57-63.
2. Ozaki K, Kikly K, Michalovich D, et al. Cloning of a type I cytokine receptor most related to the IL-2 receptor beta chain. *Proc Natl Acad Sci USA*. 2000;97(21):11439-44.
3. Asao H, Okuyama C, Kumaki S, et al. the common gamma-chain is an indispensable subunit of the IL-21 receptor complex. *J Immunol*. 2001;167(1):1-5.
4. Vosshenrich CA, Di Santo JP. Cytokines: IL-21 joins the gamma(c)-dependent network? *Curr Biol*. 2001;11(5):R175-7.

Not for further distribution without written consent.

Copyright © 2000-2012 eBioscience, Inc.

Tel: 888.999.1371 or 858.642.2058 • Fax: 858.642.2046 • [www.ebioscience.com](http://www.ebioscience.com) • [info@ebioscience.com](mailto:info@ebioscience.com)

---

## **Anti-Human IL-21 Purified**

**Catalog Number:** 14-6465

**Also known as:** Interleukin-21, IL21

**RUO: For Research Use Only. Not for use in diagnostic procedures.**

---

### **Related Products**

18-8816 Rabbit TrueBlot®: Anti-Rabbit IgG HRP

---

Not for further distribution without written consent.

Copyright © 2000-2012 eBioscience, Inc.

Tel: 888.999.1371 or 858.642.2058 • Fax: 858.642.2046 • [www.ebioscience.com](http://www.ebioscience.com) •  
[info@ebioscience.com](mailto:info@ebioscience.com)