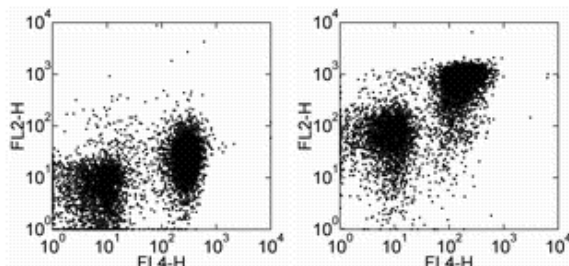


Anti-Mouse CD272 (BTLA) Purified

Catalog Number: 14-5955

Also Known As: B and T lymphocyte attenuator

RUO: For Research Use Only



Staining of C57BL/6 splenocytes with Anti-Human/Mouse CD45R (B220) APC (cat. 17-0452) and 0.125 µg of Mouse IgG1 K Isotype Control Purified (cat. 14-4714) (left) or 0.125 µg of Anti-Mouse CD272 (BTLA) Purified (right) followed by Anti-Mouse IgG Biotin (cat. 13-4013) and Streptavidin PE (cat. 12-4317). Total viable cells were used for analysis.

Product Information

Contents: Anti-Mouse CD272 (BTLA) Purified

REF **Catalog Number:** 14-5955

Clone: 6G3

Concentration: 0.5 mg/mL

Host/Isotype: Mouse IgG1, kappa

Formulation: aqueous buffer, 0.09% sodium azide, may contain carrier protein/stabilizer



Temperature Limitation: Store at 2-8°C.



Batch Code: Refer to Vial



Use By: Refer to Vial



Caution, contains Azide

Description

The 3F9.D12 antibody reacts with mouse BTLA, B and T lymphocyte attenuator from both BALB/c and C57Bl/6 strains. BTLA is expressed by peripheral lymphocytes, splenic macrophages, developing B cells in the bone marrow and developing T cells in thymus and mature, but not immature bone marrow-derived dendritic cells. BTLA is implicated as a negative regulator of the activation and/or function of various hemopoietic cell types. It is reported that BTLA binds to B7-H4, but further studies are needed to confirm this interaction.

Note: The anti-mouse BTLA monoclonal antibody 6F7 is reported to stain CD4+ and CD8+ single-positive (SP) thymocytes (Hurchla et al). However, other anti-mouse BTLA clones generated simultaneously with 6F7 (8F4, 3F9.D12, 6G3 and 6H6) do not stain SP thymocytes. It is not understood why there is a discrepancy in thymocyte staining however clones 8F4, 3F9.D12, 6G3 and 6H6 stain similar populations to 6F7 in splenocytes and bone marrow cells.

Applications Reported

This 6G3 antibody has been reported for use in flow cytometric analysis.

Applications Tested

This 6G3 antibody has been tested by flow cytometric analysis of mouse splenocytes. This can be used at less than or equal to 0.25 µg per test. A test is defined as the amount (µg) of antibody that will stain a cell sample in a final volume of 100 µL. Cell number should be determined empirically but can range from 10⁵ to 10⁸ cells/test. It is recommended that the antibody be carefully titrated for optimal performance in the assay of interest.

References

Watanabe N, Gavrieli M, Sedy JR, Yang J, Fallarino F, Loftin SK, Hurchla MA, Zimmerman N, Sim J, Zang X, Murphy TL, Russell JH, Allison JP, Murphy KM. 2003. BTLA is a lymphocyte inhibitory receptor with similarities to CTLA-4 and PD-1. *Nat Immunol.* 4 (7): 670-9.

Sedy JR, Gavrieli M, Potter KG, Hurchla MA, Lindsley RC, Hildner K, Scheu S, Pfeffer K, Ware CF, Murphy TL, Murphy KM. 2005. B and T lymphocyte attenuator regulates T cell activation through interaction with herpesvirus entry mediator. *Nat Immunol.* (6)1: 90-8.

Hurchla MA, Sedy JR, Gavrielli M, Drake CG, Murphy TL, Murphy KM. 2005. B and T Lymphocyte Attenuator exhibits structural expression polymorphisms and is highly induced in CD4+ T cells. *The Journal of Immunology.* 174: 3377-3385.

Related Products

12-5950 Anti-Mouse CD272 (BTLA) PE (6F7)

12-5956 Anti-Mouse CD272 (BTLA) PE (8F4)

14-4714 Mouse IgG1 K Isotype Control Purified (P3.6.2.1)
17-0452 Anti-Human/Mouse CD45R (B220) APC (RA3-6B2)

Not for further distribution without written consent.

Copyright © 2000-2010 eBioscience, Inc.

Tel: 888.999.1371 or 858.642.2058 • Fax: 858.642.2046 • www.eBioscience.com • info@eBioscience.com