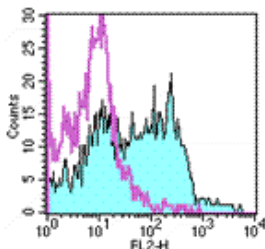


## Anti-Mouse BP-1 Purified

**Catalog Number:** 14-5891

**Also Known As:** BP1, Ly-51, Ly51

**RUO: For Research Use Only. Not for use in diagnostic procedures.**



Staining of BALB/c bone marrow cells with 0.5 ug of Rat IgG2a K Isotype Control Purified (cat. 14-4321) (open histogram) or 0.5 ug of Anti-Mouse BP-1 Purified (filled histogram) followed by Anti-Rat IgG Biotin (cat. 13-4813) and Streptavidin PE (cat. 12-4317). Cells in the lymphocyte gate were used for analysis.

### Product Information

**Contents:** Anti-Mouse BP-1 Purified

 **Catalog Number:** 14-5891

**Clone:** 6C3

**Concentration:** 0.5 mg/mL

**Host/Isotype:** Rat IgG2a, kappa

**Formulation:** aqueous buffer, 0.09% sodium azide, may contain carrier protein/stabilizer



**Temperature Limitation:** Store at 2-8°C.



**Batch Code:** Refer to Vial



**Use By:** Refer to Vial



**Caution, contains Azide**

### Description

The 6C3 monoclonal antibody reacts with mouse BP-1, also known as Ly-51 and 6C3 antigen. BP-1 is a 140 kDa type II transmembrane protein that is present on the surface as a disulfide-linked homodimer. This molecule is an enzyme with aminopeptidase A (APA) activity and is expressed by bone marrow stromal cells, thymic cortical epithelial cells and at early stages of mouse B cell development, on pre-B cells. The low level of BP-1 expression on pre-B cells can be upregulated in the presence of IL-7.

### Applications Reported

The 6C3 antibody has been reported for use in flow cytometric analysis, immunoprecipitation, and immunohistochemical staining.

### Applications Tested

The 6C3 antibody has been tested by flow cytometric analysis of mouse bone marrow cell suspensions. This can be used at less than or equal to 1 µg per test. A test is defined as the amount (µg) of antibody that will stain a cell sample in a final volume of 100 µL. Cell number should be determined empirically but can range from 10<sup>5</sup> to 10<sup>8</sup> cells/test. It is recommended that the antibody be carefully titrated for optimal performance in the assay of interest.

### References

- Pillemer E., C. Whitlok, I. L. Weissman. 1984. Transformatino-associate proteins in murine B-cell lymphomas that are distinct from Abelson virus gene products. *Proc. Natl. Acad. Sci.* 81:4434-4438
- Morse III, H. C., G. F. Tidmarsh, K. L. Holmes, T. F. Frederickson, J. N. Hartley, J. H. Pierce, W. Y. Langdon, M. O. Dailey, and I. L. Weissman. 1987. Expression of the 6C3 antigen on murine hematopoietic neoplasms. Association with expression of abl, ras, fes, src, erbB, and Cas NS-1 oncogenes but not with myc. *J. Exp. Med.* 165:920-925
- Wu, Q., G. F. Tidmarsh, P. A. Welch, J. H. Pierce, I. L. Weissman, M. D. Cooper. 1989. The early B lineage antigen BP-1 and the transformation-associated antigen 6C3 are on the same molecule. *J. Immunol.* 143:3303-3308

### Related Products

11-4811 Anti-Rat IgG FITC

14-4321 Rat IgG2a K Isotype Control Purified (eBR2a)

