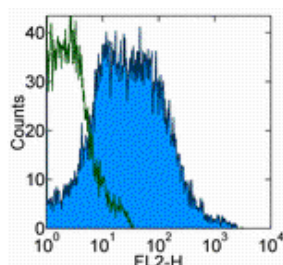


Anti-Human/Mouse Integrin beta 7 Purified

Catalog Number: 14-5867

Also Known As: Integrin b7, ITGB7

RUO: For Research Use Only



Staining of normal human peripheral blood cells with 0.06 ug of Rat IgG2a K Isotype Control Purified (cat. 14-4321) (open histogram) or 0.06 ug of Anti-Human/Mouse Integrin β 7 Purified (filled histogram) followed by F(ab')₂ Anti-Rat IgG PE (cat. 12-4822). Cells in the lymphocyte gate were used for analysis.

Product Information

Contents: Anti-Human/Mouse Integrin beta 7 Purified

REF **Catalog Number:** 14-5867

Clone: FIB504

Concentration: 0.5 mg/mL

Host/Isotype: Rat IgG2a, kappa

Formulation: aqueous buffer, 0.09% sodium azide, may contain carrier protein/stabilizer



Temperature Limitation: Store at 2-8°C.



Batch Code: Refer to Vial



Use By: Refer to Vial



Caution, contains Azide

Description

The FIB504 monoclonal antibody reacts with human and mouse integrin beta 7. Integrin beta 7 is a 130 kD glycoprotein which associates with integrin alpha 4 (CD49d) to form the alpha 4 beta 7 integrin LPAM-1, expressed on intraepithelial lymphocytes. It also associates with alpha E (CD103) to form the alpha E beta 7 integrin HML-1, expressed on T cells adjacent to mucosal epithelium and intraepithelial lymphocytes. Main ligands for integrin alpha 4 beta 7 include VCAM-1 (CD106), MAdCAM-1 and fibronectin, while the main ligand of integrin alpha E beta 7 is E-cadherin (CD324). Integrin beta 7 plays an important role in the adhesion of leukocytes to endothelial cells promoting the transmigration of leukocytes to extravascular spaces during the inflammatory response. The FIB504 antibody has been reported to have blocking activity.

Applications Reported

This FIB504 antibody has been reported for use in flow cytometric analysis and functional assays.

Applications Tested

This FIB504 antibody has been tested by flow cytometric analysis of human peripheral blood cells. This can be used at less than or equal to 0.125 μ g per test. A test is defined as the amount (μ g) of antibody that will stain a cell sample in a final volume of 100 μ L. Cell number should be determined empirically but can range from 10^5 to 10^8 cells/test. It is recommended that the antibody be carefully titrated for optimal performance in the assay of interest.

References

Rodriguez MW, Paquet AC, Yang YH, Erle DJ. Differential gene expression by integrin beta7+ and beta7- memory T helper cells. BMC Immunol. 2004 Jul 5;5:13. (**FIB504**, FC, PubMed)

Meerschaert J, Vrtis RF, Shikama Y, Sedgwick JB, Busse WW, Mosher DF. Engagement of alpha4beta7 integrins by monoclonal antibodies or ligands enhances survival of human eosinophils in vitro. J Immunol. 1999 Dec 1;163(11):6217-27. (**FIB504**, FA, PubMed)

Andrew DP, Berlin C, Honda S, Yoshino T, Hamann A, Holzmann B, Kilshaw PJ, Butcher EC. Distinct but overlapping epitopes are involved in alpha4beta7-mediated adhesion to vascular cell adhesion molecule-1, mucosal addressin-1, fibronectin, and lymphocyte aggregation. J Immunol. 1994 Nov 1;153(9):3847-61. (**FIB504**, FA, PubMed)

Related Products

11-4811 Anti-Rat IgG FITC

14-4321 Rat IgG2a K Isotype Control Purified

Not for further distribution without written consent.

Copyright © 2000-2010 eBioscience, Inc.

Tel: 888.999.1371 or 858.642.2058 • Fax: 858.642.2046 • www.eBioscience.com • info@eBioscience.com