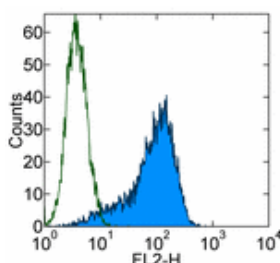


## Anti-Mouse ESAM Purified

Catalog Number: 14-5852

Also Known As: Endothelial cell-Selective Adhesion Molecule

RUO: For Research Use Only



Staining of bEnd.3 cell line with 0.06 µg of Rat IgG2a κ Isotype Control Purified (cat. 14-4321) (open histogram) or 0.06 µg of Anti-Mouse ESAM Purified (filled histogram) followed by F(ab')<sub>2</sub> Anti-Rat IgG PE (cat. 12-4822). Total viable cells were used for analysis.

### Product Information

Contents: Anti-Mouse ESAM Purified


**REF** Catalog Number: 14-5852

Clone: 1G8

Concentration: 0.5 mg/ml


Host/Isotype: Rat IgG2a, κ

Formulation: aqueous buffer, 0.09% sodium azide, may contain carrier protein/stabilizer

 Temperature Limitation: Store at 2-8°C.

**LOT** Batch Code: Refer to Vial

 Use By: Refer to Vial

 Caution, contains Azide

### Description

The 1G8 monoclonal antibody reacts with mouse ESAM (endothelial cell-selective adhesion molecule). ESAM is a 55-kDa membrane protein composed of 2 extracellular Ig domains, a single transmembrane domain, and a 120 amino acid cytoplasmic domain. ESAM is related to members of the junctional adhesion molecule (JAM) family, and is expressed on endothelial cells and activated platelets. ESAM at endothelial tight junctions plays a role in the regulation of vascular permeability, in response to agents such as VEGF or extravasating neutrophils.

### Applications Reported

This 1G8 antibody has been reported for use in flow cytometric analysis, immunoprecipitation, and immunohistology staining of frozen tissue sections.

### Applications Tested

This 1G8 antibody has been tested by flow cytometric analysis of the bEnd.3 mouse endothelioma cell line. This can be used at less than or equal to 0.125 µg per test. A test is defined as the amount (µg) of antibody that will stain a cell sample in a final volume of 100 µL. Cell number should be determined empirically but can range from 10<sup>5</sup> to 10<sup>8</sup> cells/test. It is recommended that the antibody be carefully titrated for optimal performance in the assay of interest.

### References

Nasdala I, Wolburg-Buchholz K, Wolburg H, Kuhn A, Ebnet K, Brachtendorf G, Samulowitz U, Kuster B, Engelhardt B, Vestweber D, Butz S. A transmembrane tight junction protein selectively expressed on endothelial cells and platelets. *J Biol Chem.* 2002 May 3;277(18):16294-303. Epub 2002 Feb 14. (1G8, FC, IP, IH/F PubMed)

Wegmann F, Petri B, Khandoga AG, Moser C, Khandoga A, Volkery S, Li H, Nasdala I, Brandau O, Fassler R, Butz S, Krombach F, Vestweber D. ESAM supports neutrophil extravasation, activation of Rho, and VEGF-induced vascular permeability. *J Exp Med.* 2006 Jul 10;203(7):1671-7. Epub 2006 Jul 3. (PubMed)

Wegmann F, Ebnet K, Du Pasquier L, Vestweber D, Butz S. Endothelial adhesion molecule ESAM binds directly to the multidomain adaptor MAGI-1 and recruits it to cell contacts. *Exp Cell Res.* 2004 Oct 15;300(1):121-33. (PubMed)

### Related Products

11-4317 Streptavidin FITC

11-4811 Anti-Rat IgG FITC

12-4317 Streptavidin PE

13-4813 Anti-Rat IgG Biotin (Polyclonal)

14-4321 Rat IgG2a K Isotype Control Purified

---

Not for further distribution without written consent.

Copyright © 2000-2010 eBioscience, Inc.

Tel: 888.999.1371 or 858.642.2058 • Fax: 858.642.2046 • [www.eBioscience.com](http://www.eBioscience.com) • [info@eBioscience.com](mailto:info@eBioscience.com)