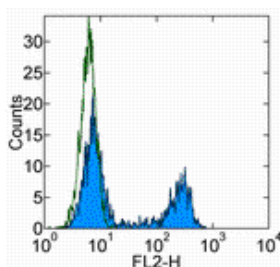


Anti-Mouse CD326 (EpCAM) Purified

Catalog Number: 14-5791

Also Known As: epithelial cell adhesion molecule

RUO: For Research Use Only. Not for use in diagnostic procedures.



Staining of the TE-71 thymic epithelial cell line with 0.06 ug of Rat IgG2a kappa Isotype Control Purified (cat. 14-4321) (open histogram) or 0.06 ug of Anti-Mouse CD326 (EpCAM) Purified (filled histogram) followed by F(ab')₂ Anti-Rat IgG PE (cat. 12-4822). Total viable cells were used for analysis.

Product Information

Contents: Anti-Mouse CD326 (EpCAM) Purified

REF **Catalog Number:** 14-5791

Clone: G8.8

Concentration: 0.5 mg/mL

Host/Isotype: Rat IgG2a, kappa

Formulation: aqueous buffer, 0.09% sodium azide, may contain carrier protein/stabilizer



Temperature Limitation: Store at 2-8°C.



Batch Code: Refer to Vial



Use By: Refer to Vial

Description

The G8.8 monoclonal antibody reacts with the 40 kDa mouse EpCAM (epithelial cellular adhesion molecule), also known as EGP40 (epithelial glycoprotein 40), 17-1A antigen, TACSTD1 (tumor-associated calcium signal transducer 1), and CD326. The immunogen used to generate the G8.8 antibody was the TE-71 thymic epithelial cell line. CD326 is expressed on the majority of epithelial cells, and is considered a pan-carcinoma antigen. CD326 mediates calcium-independent, homophilic, cell-cell adhesion and may function as a growth factor receptor. The antigen is being used as a target for immunotherapy treatment of human carcinomas. CD326 binds LAIR-1 (CD305) and LAIR-2 (CD306) to inhibit cellular activation and inflammation. This epithelial glycoprotein is now recognized as having an important role in tumor biology.

Applications Reported

The G8.8 antibody has been reported for use in flow cytometric analysis, immunoprecipitation, and immunohistology staining of frozen tissue sections.

Applications Tested

This G8.8 antibody has been tested by flow cytometric analysis of TE-71 cells, a murine thymic epithelial cell line. This can be used at less than or equal to 0.125 µg per test. A test is defined as the amount (µg) of antibody that will stain a cell sample in a final volume of 100 µL. Cell number should be determined empirically but can range from 10⁵ to 10⁸ cells/test. It is recommended that the antibody be carefully titrated for optimal performance in the assay of interest.

References

Farr A, Nelson A, Truex J, Hosier S. Epithelial heterogeneity in the murine thymus: a cell surface glycoprotein expressed by subcapsular and medullary epithelium. *J Histochem Cytochem.* 1991 May;39(5):645-53. (**G8.8**, FC, IHC, IP, PubMed)

Borkowski TA, Nelson AJ, Farr AG, Udey MC. Expression of gp40, the murine homologue of human epithelial cell adhesion molecule (Ep-CAM), by murine dendritic cells. *Eur J Immunol.* 1996 Jan;26(1):110-4. (PubMed)

Nelson AJ, Dunn RJ, Peach R, Aruffo A, Farr AG. The murine homolog of human Ep-CAM, a homotypic adhesion molecule, is expressed by thymocytes and thymic epithelial cells. *Eur J Immunol.* 1996 Feb;26(2):401-8. (PubMed)

Dooley J, Erickson M, Farr AG. An organized medullary epithelial structure in the normal thymus expresses molecules of respiratory epithelium and resembles the epithelial thymic rudiment of nude mice. *J Immunol.* 2005 Oct 1;175(7):4331-7. (**G8.8**, FC, IHC, PubMed)

Related Products

12-4822 F(ab')₂ Anti-Rat IgG PE (polyclonal)

14-4321 Rat IgG2a K Isotype Control Purified (eBR2a)

Not for further distribution without written consent.

Copyright © 2000-2010 eBioscience, Inc.

Tel: 888.999.1371 or 858.642.2058 • Fax: 858.642.2046 • www.eBioscience.com • info@eBioscience.com