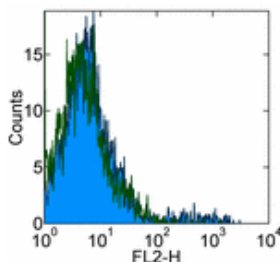


Anti-Mouse Ly-49G2 Purified

Catalog Number: 14-5781

Also Known As: LGL-1, Ly49G2

RUO: For Research Use Only



Staining of C57BL/6 splenocytes with 0.5 μ g of Rat IgG2a κ Isotype Control Purified (cat. 14-4321) (open histogram) or 0.5 μ g of Anti-Mouse Ly-49G2 Purified (filled histogram) followed by Anti-Rat IgG Biotin (cat. 13-4813) and Streptavidin PE (cat. 12-4317). Total viable cells were used for analysis.

Product Information

Contents: Anti-Mouse Ly-49G2 Purified

REF Catalog Number: 14-5781

Clone: eBio4D11 (4D11)

Concentration: 0.5 mg/ml

Host/Isotype: Rat IgG2a, κ

Formulation: aqueous buffer, 0.09% sodium azide, may contain carrier protein/stabilizer



Temperature Limitation: Store at 2-8°C.



Batch Code: Refer to Vial



Use By: Refer to Vial



Caution, contains Azide

Description

The 4D11 monoclonal antibody reacts with Ly-49G2 (also known as LGL-1). The Ly-49 family of NK-cell receptors, members of the C-type lectin superfamily, are disulfide-linked type-II transmembrane protein homodimers with extracellular carbohydrate recognition domains, which bind to MHC class I alloantigens. The Ly-49 family members are expressed independently, such that an individual NK or T cell may display more than one class of Ly-49 receptor. Ly-49G2 is an inhibitory receptor expressed on subsets of natural killer (NK) cells, NK-T cells (in all strains tested), and on a population of memory CD8⁺ T cells (in C57BL/6 mice). The 4D11 antibody has been reported to cross react with the Ly-49AB6, Ly-49ABALB, and Ly-49T129/J inhibitory receptors and Ly-49LCBA/J activating receptors. The proportion of NK-T cells expressing Ly-49A and Ly-49G2 is higher in the thymus than in liver, and there is evidence that down-regulation of Ly-49 receptor expression is necessary for normal NK-T-cell development to occur.

Applications Reported

This eBio4D11 (4D11) antibody has been reported for use in flow cytometric analysis, and immunoprecipitation.

Applications Tested

This eBio4D11 (4D11) antibody has been tested by flow cytometric analysis of mouse splenocytes. This can be used at less than or equal to 1.0 μ g per test. A test is defined as the amount (μ g) of antibody that will stain a cell sample in a final volume of 100 μ L. Cell number should be determined empirically but can range from 10^5 to 10^8 cells/test. It is recommended that the antibody be carefully titrated for optimal performance in the assay of interest.

References

Mason, L.H., et al. 1995. Cloning and functional characteristics of murine large granular lymphocyte-1: a member of the Ly-49 gene family (Ly-49G2). *J. Exp. Med.* 182: 293 – 303.

Ortaldo, J.R., et al. 1998. The Ly-49 family: regulation of cytotoxicity and cytokine production in murine CD3⁺ cells. *J. Immunol.* 160: 1158 - 1165.

Mason, L., et al. 1988. LGL-1: a non-polymorphic antigen expressed on a major population of mouse natural killer cells. *J. Immunol.* 140: 4403 – 4412.

Related Products

11-4317 Streptavidin FITC

11-4811 Anti-Rat IgG FITC

12-4317 Streptavidin PE

13-4813 Anti-Rat IgG Biotin (Polyclonal)
14-4321 Rat IgG2a K Isotype Control Purified
17-4317 Streptavidin APC

Not for further distribution without written consent.

Copyright © 2000-2010 eBioscience, Inc.

Tel: 888.999.1371 or 858.642.2058 • Fax: 858.642.2046 • www.eBioscience.com • info@eBioscience.com