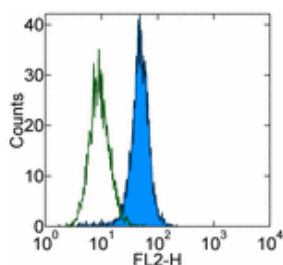


Anti-Mouse Lymphotoxin beta Receptor Purified

Catalog Number: 14-5671

Also Known As: LTβR, LTβR

RUO: For Research Use Only



Product Information

Contents: Anti-Mouse Lymphotoxin beta Receptor Purified


REF Catalog Number: 14-5671

Clone: eBio3C8 (3C8)


Concentration: 0.5 mg/ml


Host/Isotype: Rat IgG1, κ

Formulation: aqueous buffer, 0.09% sodium azide, may contain carrier protein/stabilizer

 Temperature Limitation: Store at 2-8°C.

LOT Batch Code: Refer to Vial

 Use By: Refer to Vial

 Caution, contains Azide

Description

The antibody reacts with mouse lymphotoxin-beta receptor (LTβR). Northern blot analysis of tissues from adult mice showed that expression levels of LTβR mRNA were strong in lung, liver, and kidney, moderate in heart and testes, but weak in brain, thymus, spleen, and lymph nodes. The tumor necrosis factor receptor-related protein is the human receptor for the heterotrimer of lymphotoxin-alpha and lymphotoxin-beta. This LT-alpha/LT-beta heterotrimer (LT-α1β2) is assumed to take part in immunologic reactions by cell-cell contact, but does not bind to either TNFR1 (CD120α) or TNFR2 (CD120β). LTβR is expressed by day 7 embryos, so it has been speculated that the LT-alpha/LT-beta receptor system may also have some function in early embryogenesis.

Applications Reported

This eBio3C8 (3C8) antibody has been reported for use in flow cytometric analysis.

Applications Tested

This eBio3C8 (3C8) antibody has been tested by flow cytometric analysis of NIH/3T3 cells. This can be used at less than or equal to 0.5 μg per test. A test is defined as the amount (μg) of antibody that will stain a cell sample in a final volume of 100 μL. Cell number should be determined empirically but can range from 10⁵ to 10⁸ cells/test. It is recommended that the antibody be carefully titrated for optimal performance in the assay of interest.

References

Basak S, Kim H, Kearns JD, Tergaonkar V, O'Dea E, Werner SL, Benedict CA, Ware CF, Ghosh G, Verma IM, Hoffmann A. A fourth IkappaB protein within the NF-kappaB signaling module. *Cell*. 2007 Jan 26;128(2):369-81. (3C8, FA, PubMed)

Chin RK, Lo JC, Kim O, Blink SE, Christiansen PA, Peterson P, Wang Y, Ware C, Fu YX. Lymphotoxin pathway directs thymic Aire expression. *Nat Immunol*. 2003 Nov;4(11):1121-7. Epub 2003 Sep 28.(3C8, FA, PubMed)

Nakamura, T., et al. 1995. The murine lymphotoxin-beta receptor cDNA: isolation by the signal sequence trap and chromosomal mapping. *Genomics* 30: 312-319.

Crowe, P., et al. 1996. A lymphotoxin-beta-specific receptor. *Science* 264: 707-710.

Dejardin E, Droin NM, Delhase M, Haas E, Cao Y, Makris C, Li ZW, Karin M, Ware CF, Green DR. The lymphotoxin-beta receptor induces different patterns of gene expression via two NF-kappaB pathways. *Immunity*. 2002 Oct;17(4):525-35.

Related Products

11-4317 Streptavidin FITC

11-4811 Anti-Rat IgG FITC
12-4317 Streptavidin PE
13-4813 Anti-Rat IgG Biotin (Polyclonal)
14-4301 Rat IgG1 K Isotype Control Purified
17-4317 Streptavidin APC

Not for further distribution without written consent.

Copyright © 2000-2010 eBioscience, Inc.

Tel: 888.999.1371 or 858.642.2058 • Fax: 858.642.2046 • www.eBioscience.com • info@eBioscience.com