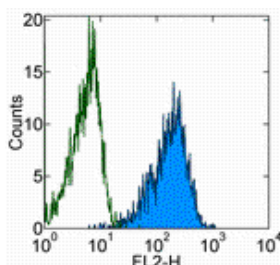


Anti-Human TSLP Receptor Purified

Catalog Number: 14-5499

Also Known As: CRLF-2, thymic stromal derived lymphopoietin receptor

RUO: For Research Use Only



Staining of human TSLP Receptor transfected cells with 0.25 ug of Mouse IgG2a K Isotype Control Purified (cat. 14-4724) (open histogram) or 0.25 ug of Anti-Human TSLP Receptor Purified (filled histogram) followed by Anti-Mouse IgG Biotin (cat. 13-4013) and Streptavidin PE (cat. 12-4317). Total viable cells were used for analysis.

Product Information

Contents: Anti-Human TSLP Receptor Purified

REF **Catalog Number:** 14-5499

Clone: eBio1A6 (1A6)

Concentration: 0.5 mg/mL

Host/Isotype: Mouse IgG2a, lambda

Formulation: aqueous buffer, 0.09% sodium azide, may contain carrier protein/stabilizer



Temperature Limitation: Store at 2-8°C.



Batch Code: Refer to Vial



Use By: Refer to Vial



Caution, contains Azide

Description

The eBio1A6 monoclonal antibody reacts with human thymic stromal-derived lymphopoietin receptor (TSLPR). TSLPR is an approximately 50 kDa protein with significant similarity to the common gamma-chain. TSLPR complexes with IL-7R alpha (CD127) to form the high affinity receptor that binds thymic stromal-derived lymphopoietin (TSLP). Human TSLPR is expressed by monocytes and CD11c+ dendritic cells, and TSLP binding induces the expression of the Th2 cell-attracting chemokines CCL17 and CCL22.

Furthermore, the TSLPR-induced activation of dendritic cells indirectly results in the increased secretion of Th cytokines IL-4, -5 and -13, which may be necessary for the regulation of CD4+ T cell homeostasis. In mice, deficiency of TSLPR has no effect on lymphocyte numbers, whereas double deficiency of TSLPR and common gamma-chain results in fewer lymphocytes than seen in mice deficient in the common gamma-chain alone. The eBio1A6 monoclonal antibody is able to cross-block binding of another anti-human TSLPR monoclonal antibody, 1D8.

Applications Reported

This eBio1A6 (1A6) antibody has been reported for use in flow cytometric analysis, and immunoblotting (WB).

Applications Tested

This eBio1A6 (1A6) antibody has been tested by flow cytometric analysis of human TSLPR-transfected Ba/F3 cells. This can be used at less than or equal to 0.5 µg per test. A test is defined as the amount (µg) of antibody that will stain a cell sample in a final volume of 100 µL. Cell number should be determined empirically but can range from 10⁵ to 10⁸ cells/test. It is recommended that the antibody be carefully titrated for optimal performance in the assay of interest.

References

Reche PA, Soumelis V, Gorman DM, Clifford T, Liu Mr, Travis M, Zurawski SM, Johnston J, Liu YJ, Spits H, de Waal Malefyt R, Kastelein RA, Bazan JF. Human thymic stromal lymphopoietin preferentially stimulates myeloid cells. *J Immunol.* 2001 Jul 1;167(1):336-43.

Soumelis V, Reche PA, Kanzler H, Yuan W, Edward G, Homey B, Gilliet M, Ho S, Antonenko S, Lauerma A, Smith K, Gorman D, Zurawski S, Abrams J, Menon S, McClanahan T, de Waal-Malefyt Rd R, Bazan F, Kastelein RA, Liu YJ. Human epithelial cells trigger dendritic cell mediated allergic inflammation by producing TSLP. *Nat Immunol.* 2002 Jul;3(7):673-80.

Related Products

11-4011 Anti-Mouse IgG FITC

11-4317 Streptavidin FITC

12-0116 Anti-Human CD11c PE (3.9)

12-4317 Streptavidin PE

13-4013 Anti-Mouse IgG Biotin (Polyclonal)
14-4724 Mouse IgG2a K Isotype Control Purified
17-4317 Streptavidin APC

Not for further distribution without written consent.

Copyright © 2000-2010 eBioscience, Inc.

Tel: 888.999.1371 or 858.642.2058 • Fax: 858.642.2046 • www.eBioscience.com • info@eBioscience.com